



FOR LEASE - WAREHOUSE / OFFICE

1,800 +/- Sq. Ft. WAREHOUSE / OFFICE
464 KENWOOD CT SUITE G, SANTA ROSA

Northern California's Premier Commercial Real Estate Firm



Daniel Silewicz

CA BRE # 01988015

Phone: 707-523-2700

Cell: 707-328-1141

Email: daniel@northbayprop.com

North Bay Property Advisors

2777 Cleveland Ave. Suite 110

Santa Rosa, CA 95403

707-523-2700

www.NorthBayProp.com



The above information, while not guaranteed, has been secured from sources we believe to be reliable. This is not an offer to sell or lease and is subject to change or withdrawal. Any interested party should verify the status of the property and the information herein.



FOR LEASE SUMMARY

PRICING

Monthly Rental Amount: \$2,100.00 (\$1.17 per SF)
Lease Type: Industrial Gross

SITE / BUILDING

Approximate Total Usable Sq. Ft.: 1,800 +/-
Warehouse: 660 +/-
Office : 1,140 +/-
Zoning: IL (Light Industrial)
Grade Level Roll Up Door: 12' wide x 12' Tall
Fire Suppression: Yes
Insulation: Yes
Warehouse Clearance: 17.5' to 19'
Power: 200 AMPS / Three Phase
Utilities Included: Water, Sewer, & Garbage*



464 Kenwood Ct Suite G, Santa Rosa:

North Bay Property Advisors is please to present 464 Kenwood Court Suite G, for lease. This ground floor space offers approximately 1,800 +/- sq. ft. with one ground floor roll up door, concrete construction, and 3 phase power. The office area provides a quasi-retail function, with an open work area on the second level. The Ownership can increase the warehouse square footage and decrease the office square footage to best meet the needs of the prospective tenant. *Inclusion of water, sewer, and garbage is conditioned on use.



PHOTOS



The above information, while not guaranteed, has been secured from sources we believe to be reliable. This is not an offer to sell or lease and is subject to change or withdrawal. Any interested party should verify the status of the property and the information herein.



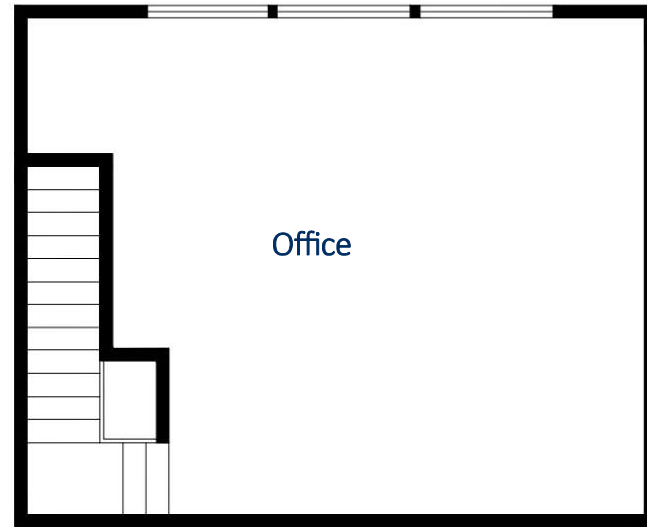
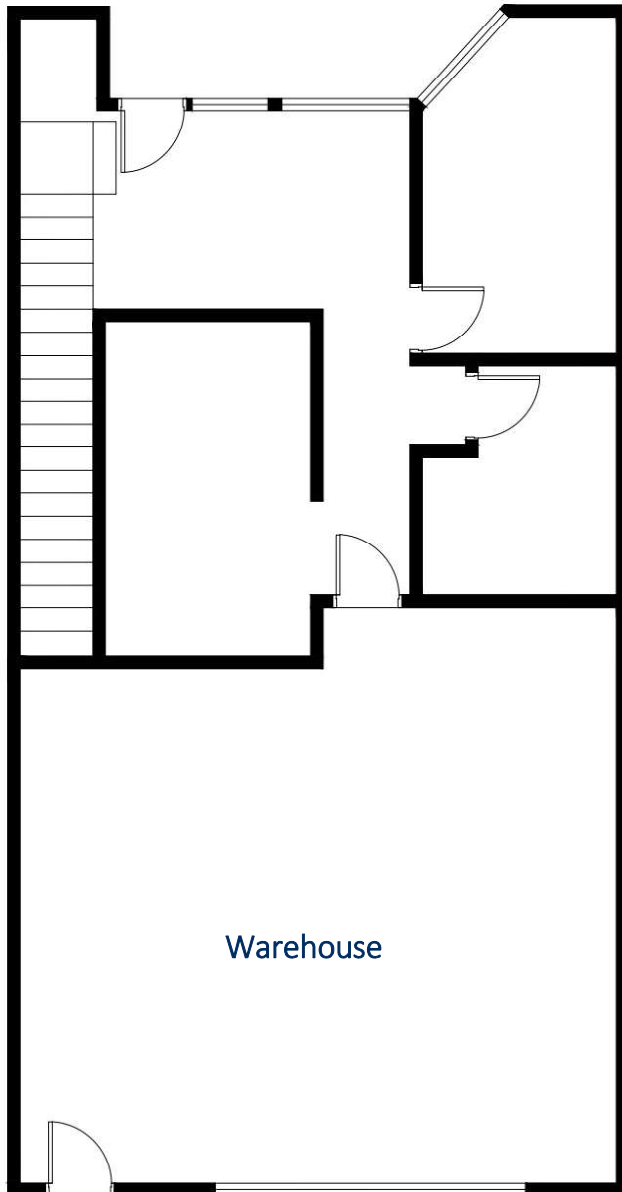
PHOTOS



The above information, while not guaranteed, has been secured from sources we believe to be reliable. This is not an offer to sell or lease and is subject to change or withdrawal. Any interested party should verify the status of the property and the information herein.



FLOOR PLAN



FIRST FLOOR PLAN



NEIGHBORHOOD MAP



The above information, while not guaranteed, has been secured from sources we believe to be reliable. This is not an offer to sell or lease and is subject to change or withdrawal. Any interested party should verify the status of the property and the information herein.



BROKER TEAM



Daniel Silewicz

CA BRE # 01988015

Phone: 707-523-2700

Cell: 707-328-1141

Email: daniel@northbayprop.com



The above information, while not guaranteed, has been secured from sources we believe to be reliable. This is not an offer to sell or lease and is subject to change or withdrawal. Any interested party should verify the status of the property and the information herein.