



FOR LEASE

880 +/- SQ. FT.

129 HEALDSBURG AVE, HEALDSBURG

Northern California's Premier Commercial Real Estate Firm



Daniel Silewicz

CA DRE # 01988015

Direct: 707-615-5988

Office: 707-523-2700

Email: Daniel@northbayprop.com



The above information, while not guaranteed, has been secured from sources we believe to be reliable. This is not an offer to sell or lease and is subject to change or withdrawal. Any interested party should verify the status of the property and the information herein.



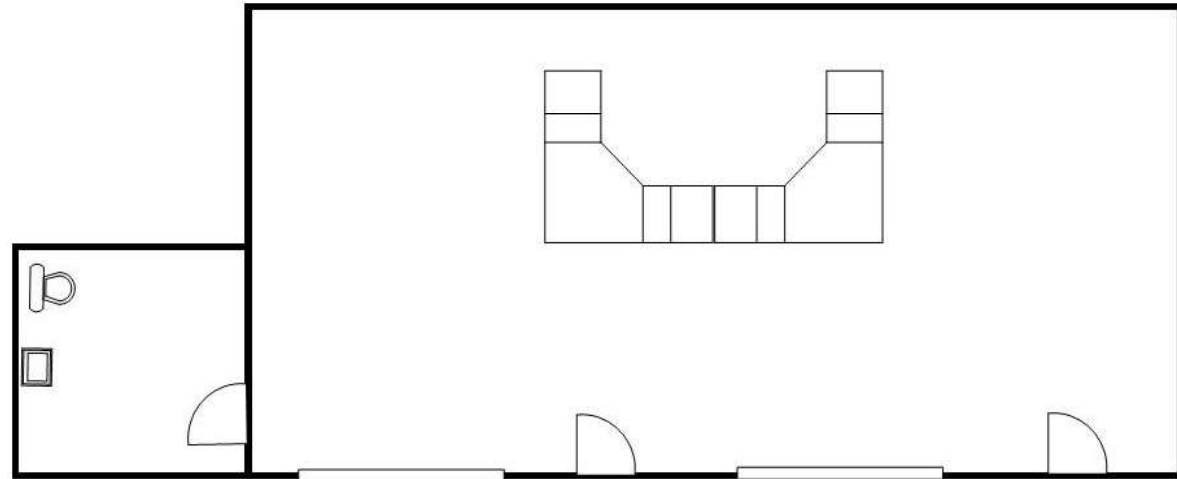
FOR LEASE SUMMARY

PRICING

Rental Rate:	\$1.25 / Sq. Ft. / Month
Lease Type:	NNN
Estimated NNN	\$0.57/ Sq. Ft. / Month
Fully Loaded Price per Sq. Ft.	\$1.82/ Sf. Ft. / Month
Total Monthly Rent	\$1,601.60

SITE / BUILDING

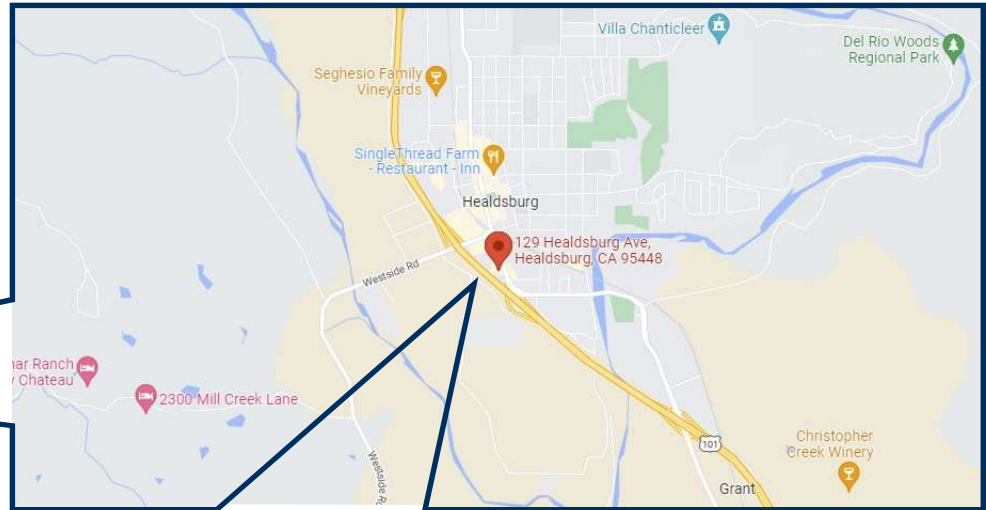
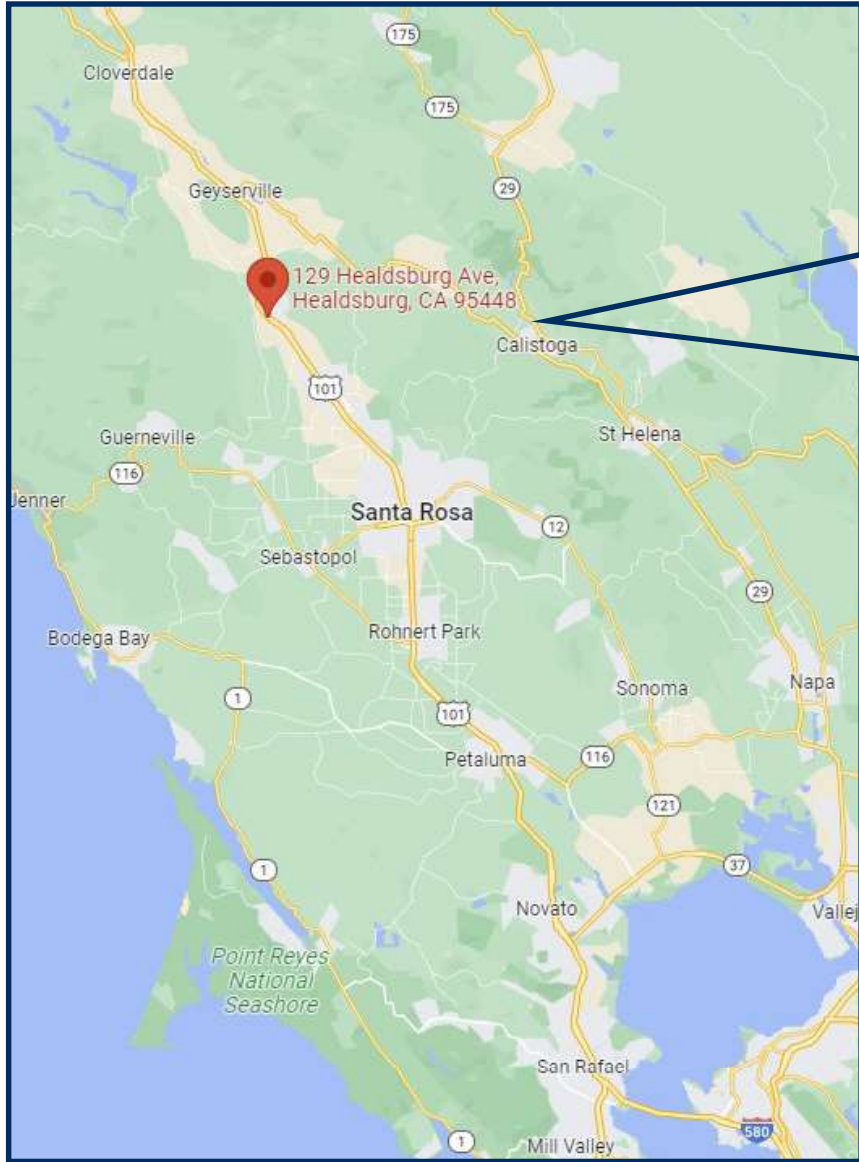
Approximate Space Sq. Ft.:	880 +/-
Traffic Count:	18,853 +/- ADT
Zoning:	MU (Mixed Use)
Close proximity:	Transpiration, Shopping, & Local Tourists Sites
Parking:	On-Site Parking



Healdsburg is a wonderful city filled with boutique stores and great possibilities for entrepreneurs. This retail location has a great opportunity to open your own specialty business. The space is on a prime gateway retail property in southern Healdsburg. The property offers excellent frontage along Healdsburg Ave, 30 plus parking spaces, and high traffic counts of 18,853 +/- ADT. The space is ready to occupy. It features plenty of natural light, and a private restroom.



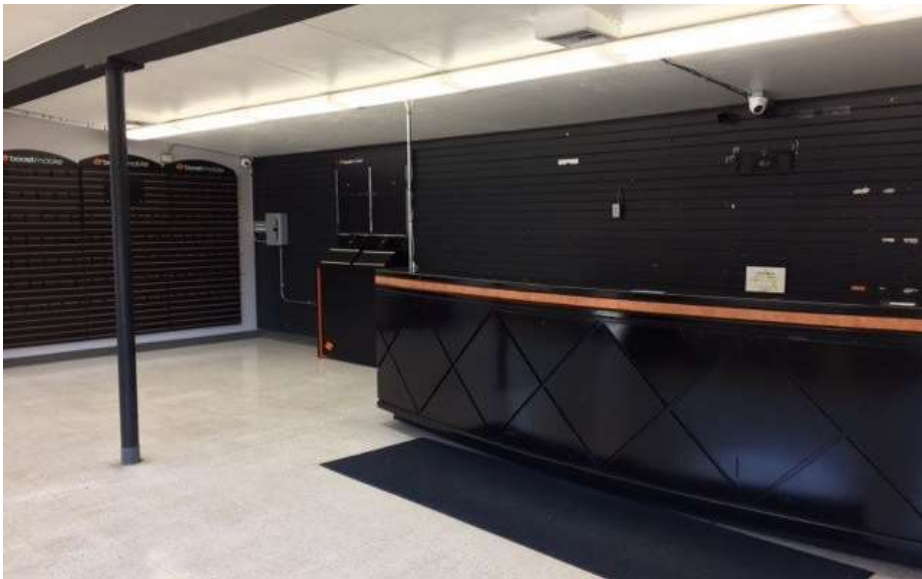
NEIGHBORHOOD MAP



The above information, while not guaranteed, has been secured from sources we believe to be reliable. This is not an offer to sell or lease and is subject to change or withdrawal. Any interested party should verify the status of the property and the information herein.



PHOTOS



The above information, while not guaranteed, has been secured from sources we believe to be reliable. This is not an offer to sell or lease and is subject to change or withdrawal. Any interested party should verify the status of the property and the information herein.



PHOTOS



The above information, while not guaranteed, has been secured from sources we believe to be reliable. This is not an offer to sell or lease and is subject to change or withdrawal. Any interested party should verify the status of the property and the information herein.



BROKER TEAM



Daniel Silewicz

CA BRE # 01988015

Phone: 707-523-2700

Cell: 707-328-1141

Email: daniel@northbayprop.com

North Bay Property Advisors

2777 Cleveland Ave. Suite 110

Santa Rosa, CA 95403

707-523-2700

www.NorthBayProp.com



NORTHERN CALIFORNIA OFFICES

SANTA ROSA

NOVATO

SONOMA / NAPA

SAN JOSE

SACRAMENTO

WALNUT CREEK

SAN FRANCISCO