



FOR LEASE
3,014 sq.ft Total
1,750 sq.ft Warehouse
1,264 sq.ft Office
Only \$2,900 per month



**546 Portal Street
Cotati, CA 94931**



Cell:
707-291-2722
Phone:
707-523-2700 ext 302
BRE No.:
01000344
Email: bill@northbayprop.com



Cell:
707-529-1722
Phone:
707-523-2700 ext 305
BRE No.:
01486375
Email: nabbott@northbayprop.com

Santa Rosa Office:
2777 Cleveland Ave., Ste., 110
Santa Rosa, CA 95403
707-523-2700

The above information, while not guaranteed, has been secured from sources we believe to be reliable. This is not an offer to sell or lease and is subject to change or withdrawal. An interested party should verify the status of the property and the information herein.

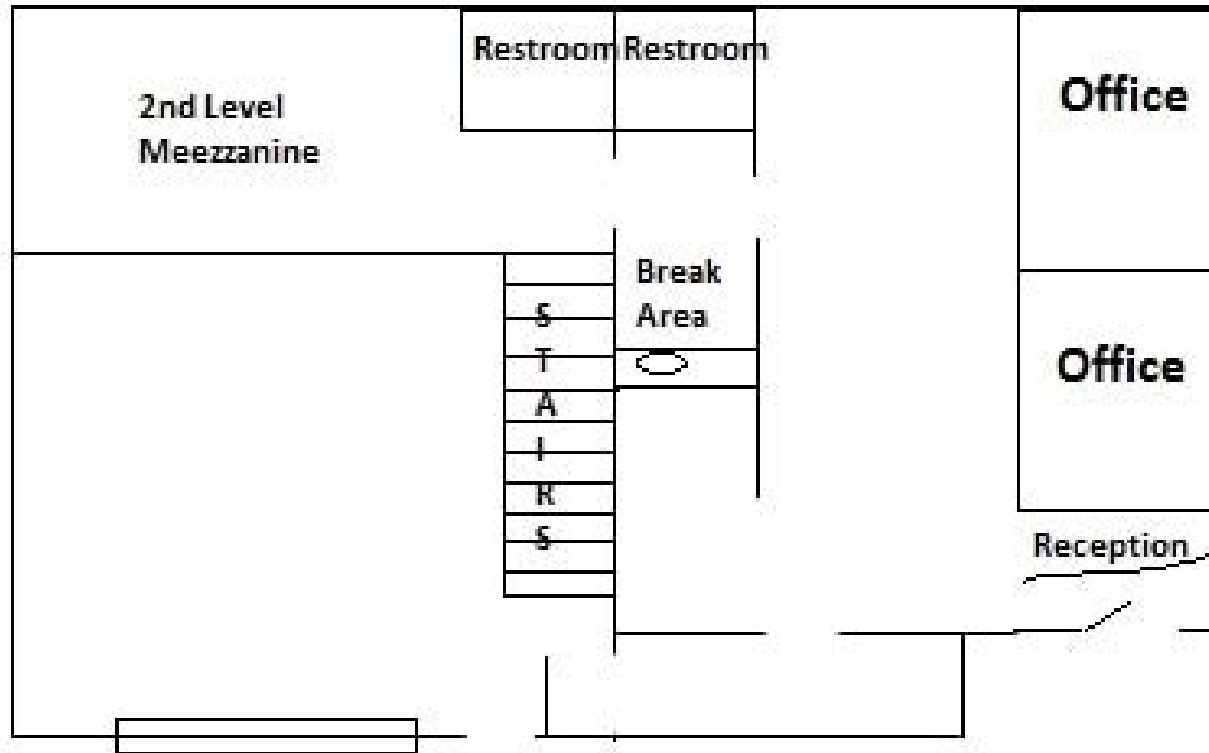
**ADDRESS:****546 Portal Street, Cotati, CA 94931**

Well appointed industrial space with really attractive office work areas. Space is configured with 1,300 sq.ft of ground floor warehouse space, plus 450 sq.ft of permitted mezzanine area. Warehouse has 200 amps, restroom, roll up door, pallet racks and 20' clear height. Adjoining office suite is 1,264 sq.ft with two private offices, open work areas, restroom, break room and attractive reception desk included. Building is in excellent condition, modern building circa 2007. Great for contractors, manufacturers, or other industrial users.



The above information, while not guaranteed, has been secured from sources we believe to be reliable. This is not an offer to sell or lease and is subject to change or withdrawal.

An interested party should verify the status of the property and the information herein.





The above information, while not guaranteed, has been secured from sources we believe to be reliable. This is not an offer to sell or lease and is subject to change or withdrawal.

An interested party should verify the status of the property and the information herein.



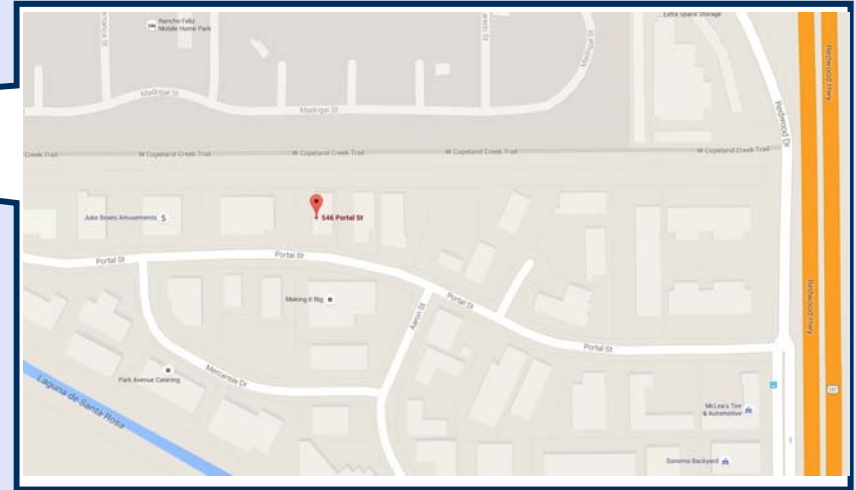
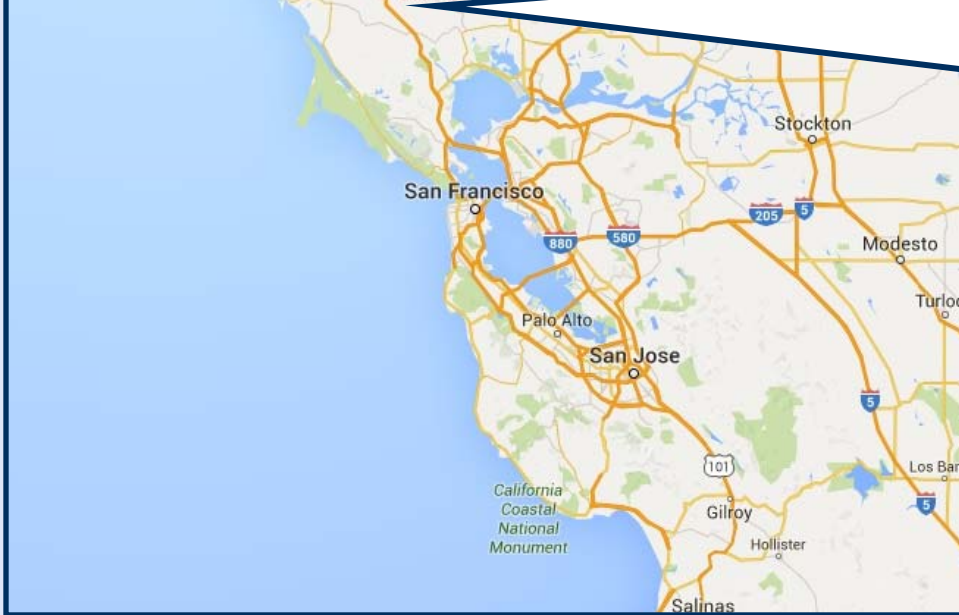
The above information, while not guaranteed, has been secured from sources we believe to be reliable. This is not an offer to sell or lease and is subject to change or withdrawal.

An interested party should verify the status of the property and the information herein.





PROPERTY / LOCATION MAPS





Nick Abbott
nabbott@northbayprop.com



Cell:
707-529-1722
Phone:
707-523-2700 ext 305
BRE No.:
01486375

William Severi, CCIM CPM
bill@northbayprop.com



Cell:
707-291-2722
Phone:
707-523-2700 ext 302
BRE No.:
01000344

Santa Rosa Office:
2777 Cleveland Ave., Ste., 110
Santa Rosa, CA 95403
707-523-2700



The above information, while not guaranteed, has been secured from sources we believe to be reliable. This is not an offer to sell or lease and is subject to change or withdrawal.

An interested party should verify the status of the property and the information herein.