



FOR LEASE
Industrial/Office Building & Yard
2,940+/- Sq. Ft.



51 Foley Street
Santa Rosa, CA 95404



BROKER:
Nick Abbott
CA BRE # 01357548
Phone: 707-523-2700 ext 305
Cell: 707 529-1722
Fax: 707-526-4311
Email: nabbott@northbayprop.com



BROKER:
William Severi
CA BRE # 01000344
Phone: 707-523-2700 ext 302
Cell: 707 291-2722
Fax: 707-891-3050
Email: bill@northbayprop.com

2777 Cleveland Ave # 110
Santa Rosa, CA 95403
707-523-2700 Main
707-526-4311 Fax
www.northbayprop.com

The above information,

while not guaranteed, has

been secured from sources we believe to be reliable.

This is not an offer to sell or lease and is subject to change or withdrawal. An interested party should verify the status of the property and the information herein.



Address:

**51 Foley Street
Santa Rosa, CA 95401**

Summary:

LEASE RATE: \$3,550 Per Month

BUILDING SIZE: 2,940 +/- Sq. Ft.

OFFICE: Four private offices totaling
1,020+/- Sq. Ft.

WAREHOUSE: 1,920 +/- Sq. Ft. with two
roll up doors.

TOTAL SITE SIZE: .15 (6,760 +/- Sq. Ft.)

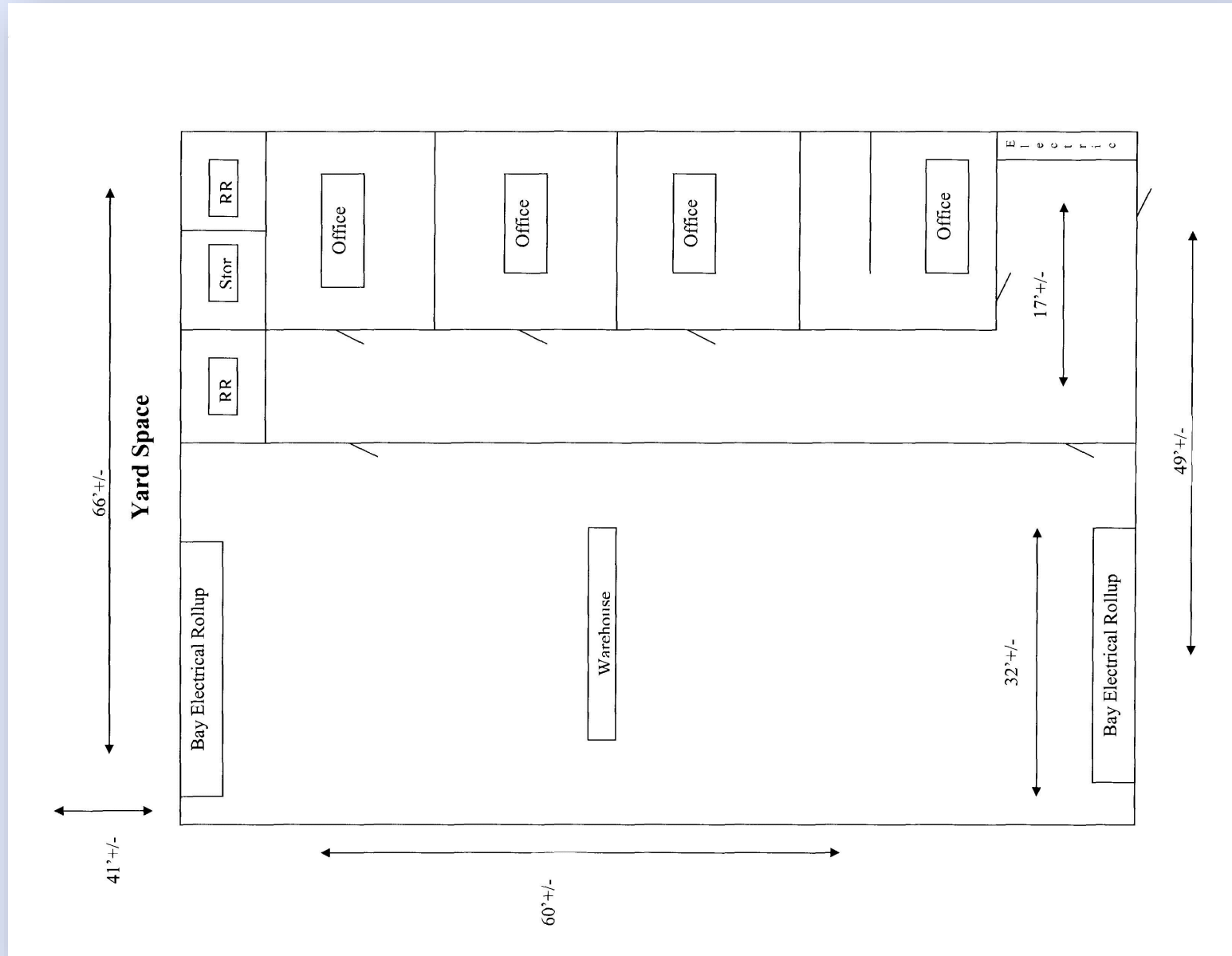
ZONING: IL (Industrial Light)



Efficient industrial building with good quality build out. Office space is built out with four private offices, two restrooms and is conditioned. The warehouse features good clear height, two drive through roll up doors and approximately 1,020+/- Sq. Ft mezzanine not included in the square footage.

The above information, while not guaranteed, has been secured from sources we believe to be reliable. This is not an offer to sell or lease and is subject to change or withdrawal.

An interested party should verify the status of the property and the information herein.

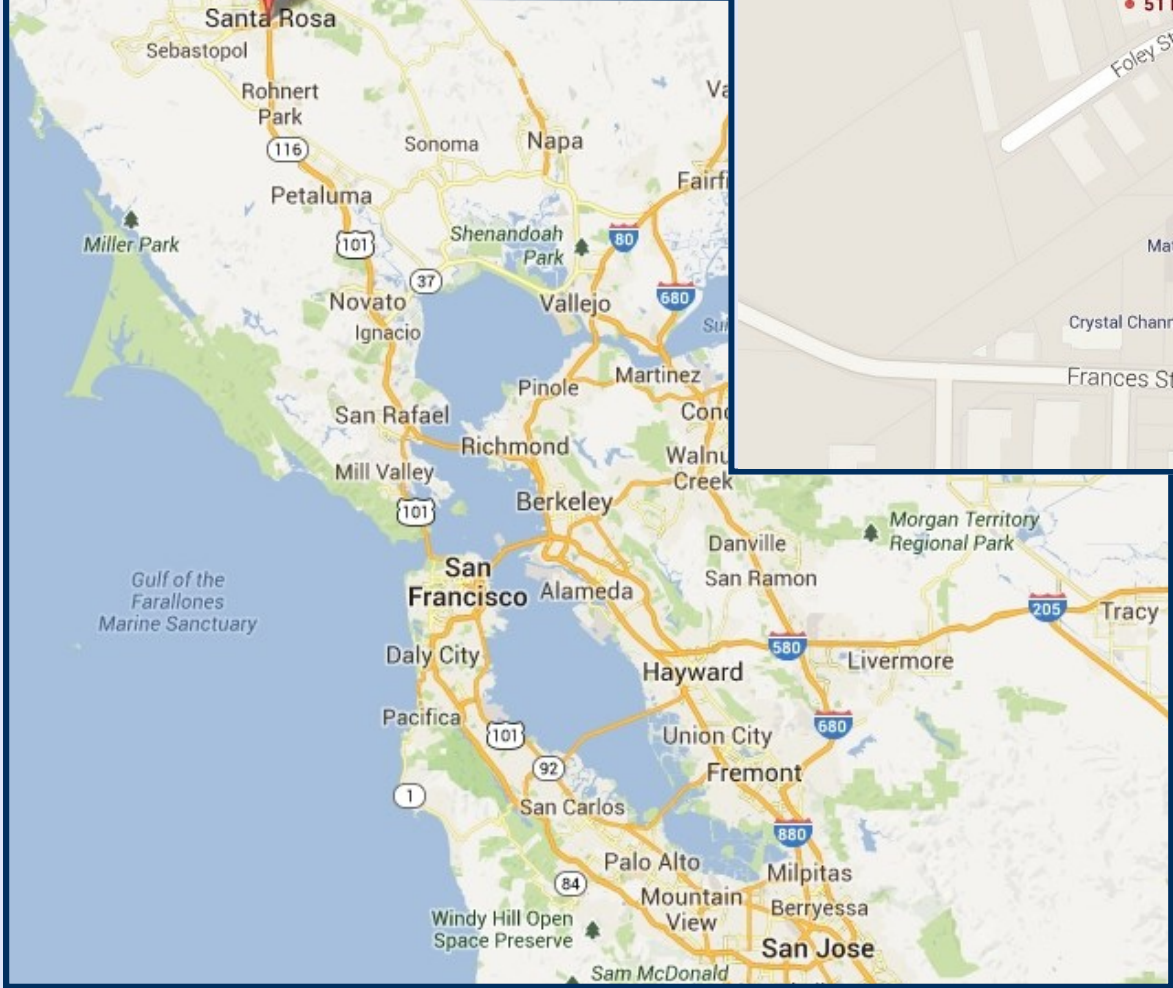
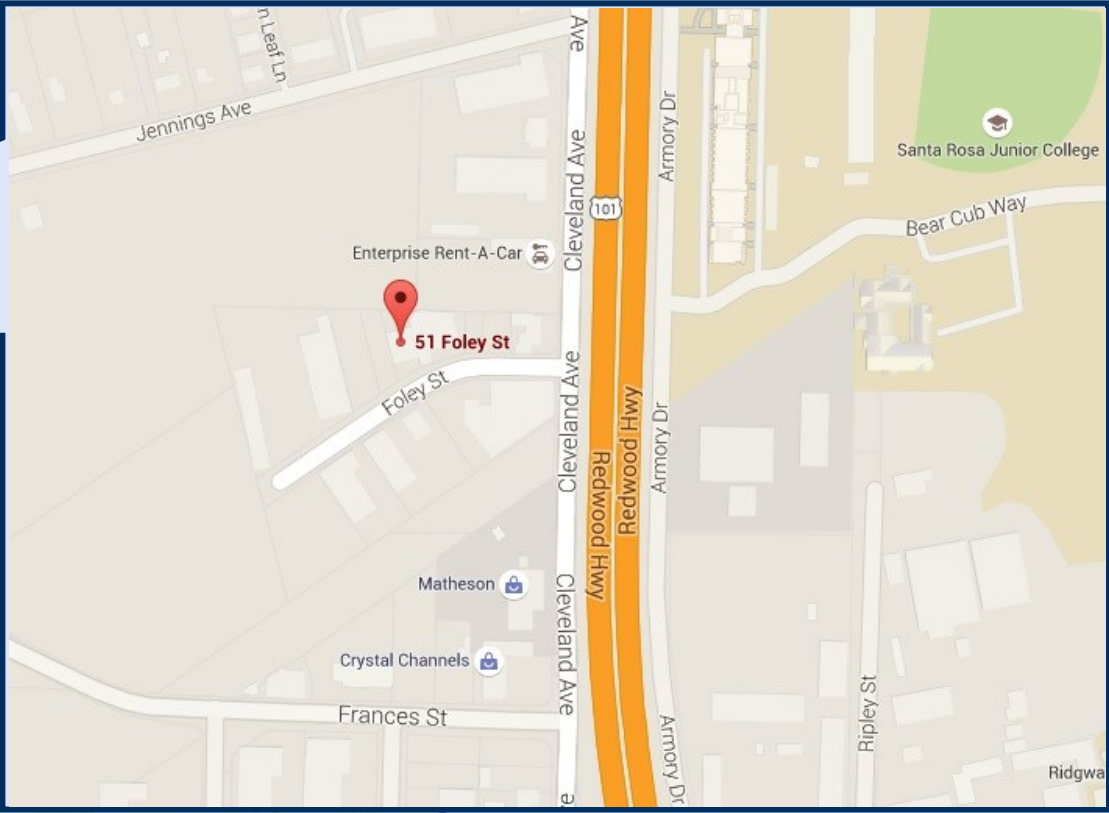


The above information, while not guaranteed, has been secured from sources we believe to be reliable. This is not an offer to sell or lease and is subject to change or withdrawal.

An interested party should verify the status of the property and the information herein.



PROPERTY / LOCATION MAPS





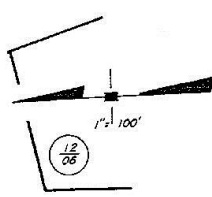
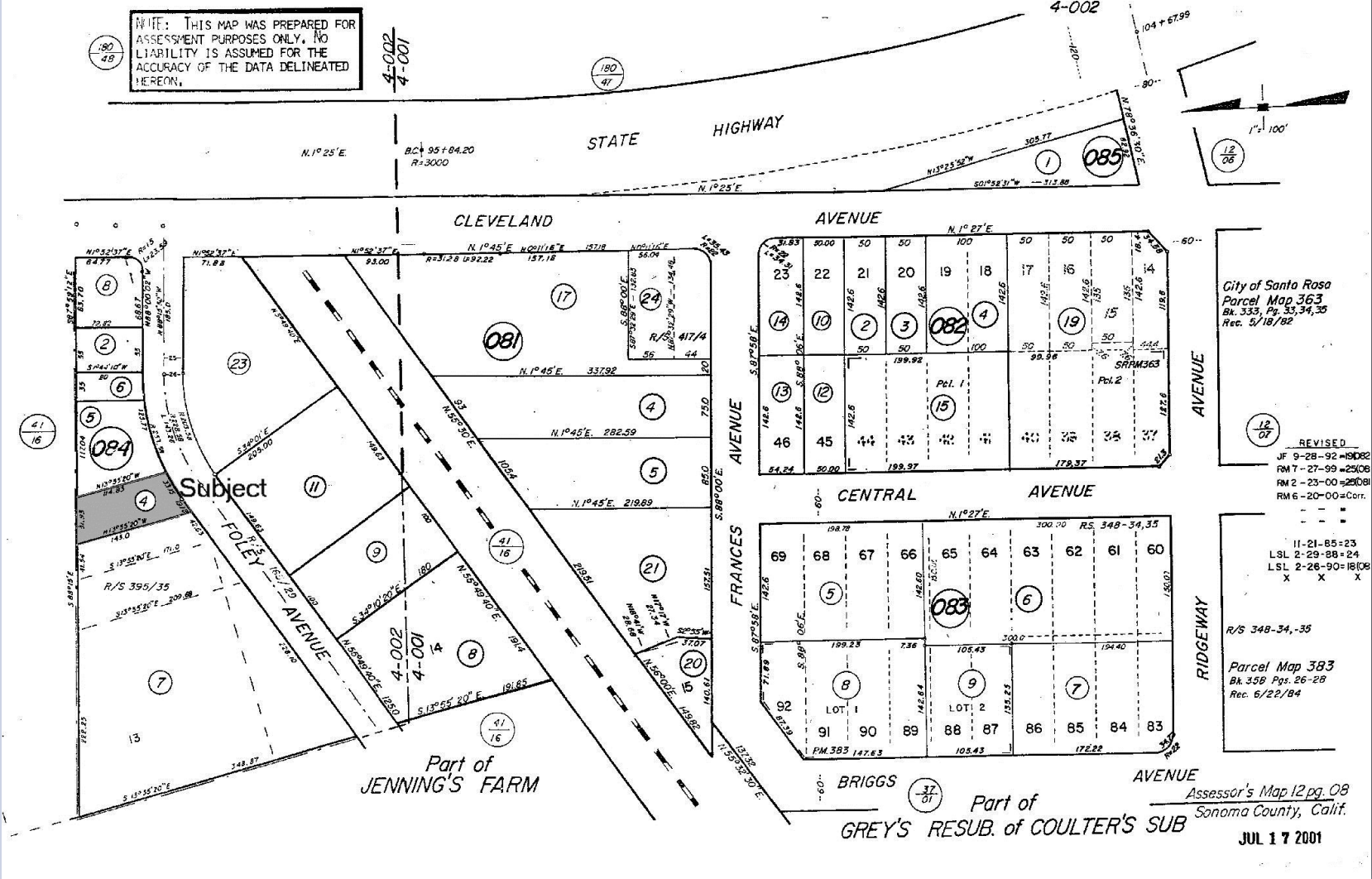
COUNTY ASSESSOR'S PARCEL MAP

TAX RATE AREA
4-001
4-002

12-08

NOTE: THIS MAP WAS PREPARED FOR ASSESSMENT PURPOSES ONLY. NO LIABILITY IS ASSUMED FOR THE ACCURACY OF THE DATA DELINEATED HEREON.

4-002
4-001



City of Santa Rosa
Parcel Map 363
Bk. 333, Pg. 33, 34, 35
Rec. 5/18/92

REVISED
JF 9-28-92=19082
RM 7-27-99=25008
RM 2-23-00=25008
RM 6-20-00=Corr.

11-21-85=23
LSL 2-29-88=24
LSL 2-26-90=1808
X X X

R/S 348-34, -35

Parcel Map 383
Bk. 358 Pgs. 26-28
Rec. 6/22/84

Assessor's Map 12 pg. 08
Sonoma County, Calif.

JUL 17 2001

The above information, while not guaranteed, has been secured from sources we believe to be reliable. This is not an offer to sell or lease and is subject to change or withdrawal.

An interested party should verify the status of the property and the information herein.



Nick Abbott
nabbott@northbayprop.com



Cell:
707-529-1722
Phone:
707-523-2700 ext 305
BRE No.:
01357548

William Severi, CCIM CPM
bill@northbayprop.com



Cell:
707-291-2722
Phone:
707-523-2700 ext 302
BRE No.:
01000344

Santa Rosa Office:
2777 Cleveland Ave., Ste., 110
Santa Rosa, CA 95403
707-523-2700



The above information, while not guaranteed, has been secured from sources we believe to be reliable. This is not an offer to sell or lease and is subject to change or withdrawal.

An interested party should verify the status of the property and the information herein.