



FOR LEASE

RETAIL / OFFICE - 3863 MONTGOMERY DRIVE
960 +/- SQ. FT. | \$1,375 MONTHLY GROSS

Northern California's Premier Commercial Real Estate Firm



Daniel Silewicz

CA BRE # 01988015

Phone: 707-523-2700

Cell: 707-328-1141

Email: daniel@northbayprop.com

North Bay Property Advisors

Santa Rosa Office

2777 Cleveland Ave. Suite 110

Santa Rosa, CA 95403

707-523-2700

www.NorthBayProp.com



The above information, while not guaranteed, has been secured from sources we believe to be reliable. This is not an offer to sell or lease and is subject to change or withdrawal. Any interested party should verify the status of the property and the information herein.



OVERVIEW

PRICING	APPROXIMATE SQ. FT.	SERVICES INCLUDED IN RENT	TENANT'S RESPONSIBILITY
\$1,375 Gross / Month	960 +/-	Water, Sewer, Trash, Property Taxes, and Property Insurance	PG&E & Liability Insurance

3863 Montgomery Drive

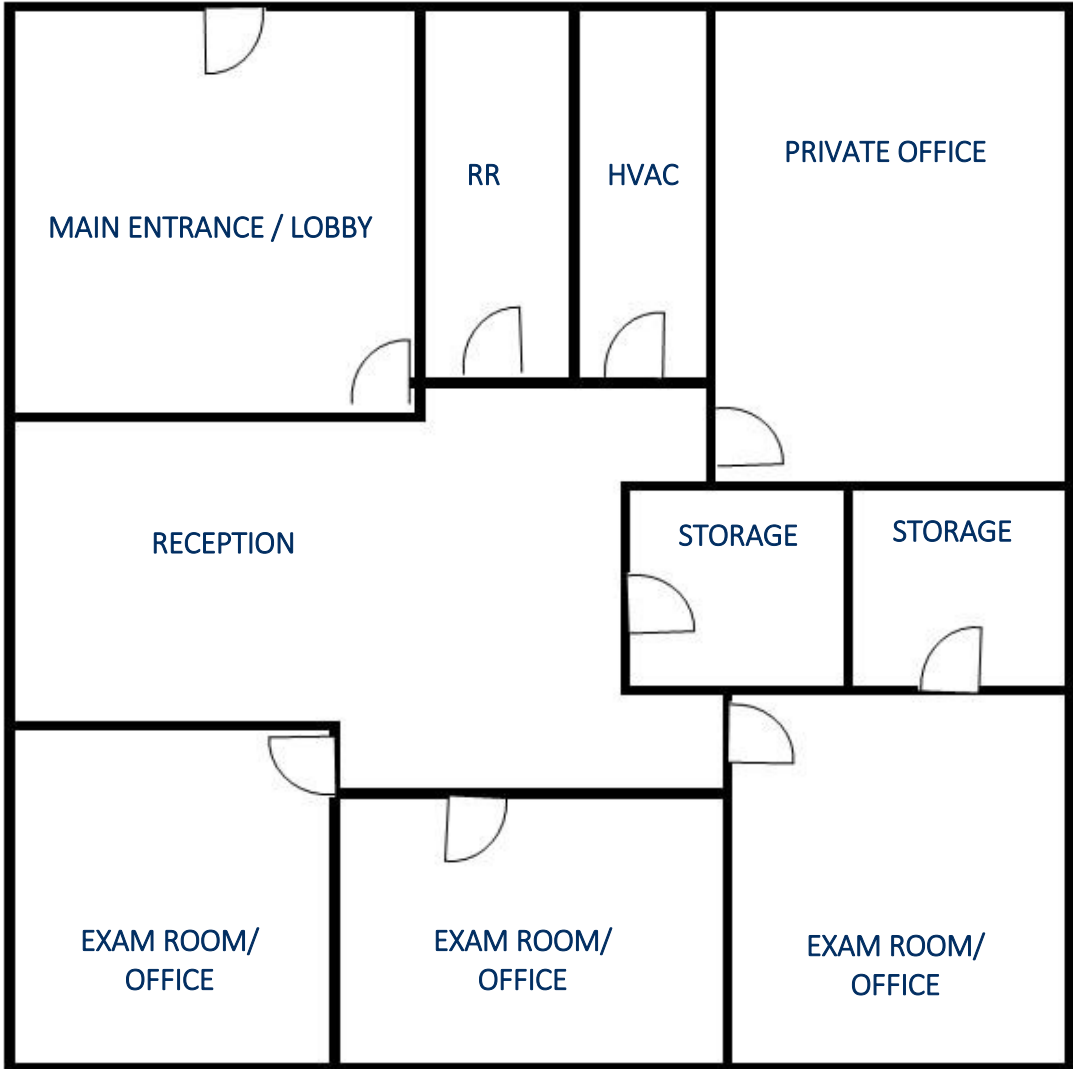
Montgomery Professional Center is located in the iconic east side of Santa Rosa. The property is close to great shopping, parks, and sought-after neighborhoods. Suite 3863 is located on the ground floor with direct access to the parking lot. The space has an abundance of natural light. The previous tenant was a dentist but could be altered as a professional office space. The space currently has one waiting room, private office, exclusive bathroom, reception area, manufacturing room, and three exam rooms.



The above information, while not guaranteed, has been secured from sources we believe to be reliable. This is not an offer to sell or lease and is subject to change or withdrawal. Any interested party should verify the status of the property and the information herein.



FLOOR PLAN





MAPS



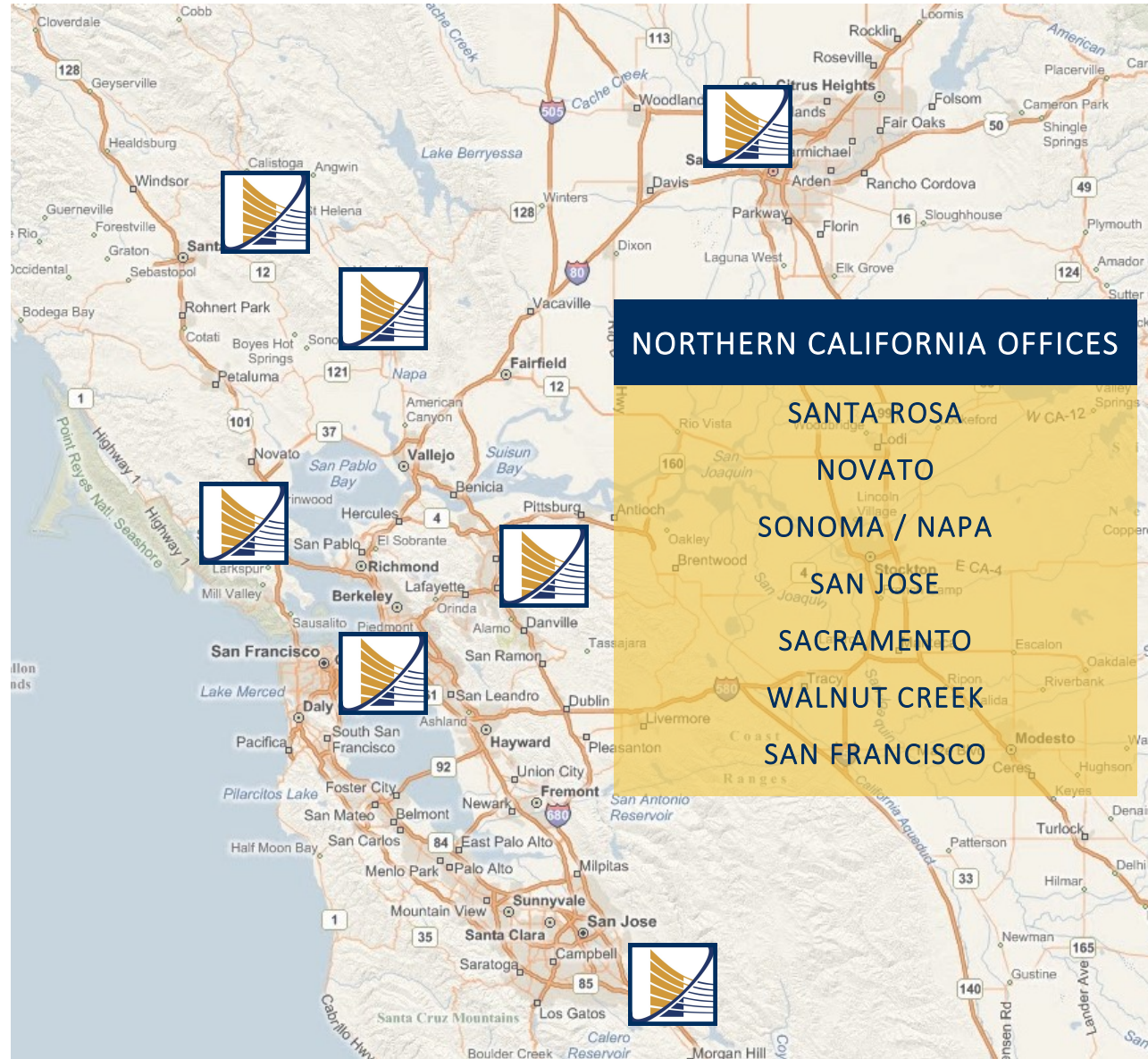
The above information, while not guaranteed, has been secured from sources we believe to be reliable. This is not an offer to sell or lease and is subject to change or withdrawal. Any interested party should verify the status of the property and the information herein.



LISTING TEAM



Daniel Silewicz
CA BRE # 01988015
Phone: 707-523-2700
Cell: 707-328-1141
Email: daniel@northbayprop.com



North Bay Property Advisors

Santa Rosa Office

2777 Cleveland Ave. Suite 110

Santa Rosa, CA 95403

707-523-2700

www.NorthBayProp.com

The above information, while not guaranteed, has been secured from sources we believe to be reliable. This is not an offer to sell or lease and is subject to change or withdrawal. Any interested party should verify the status of the property and the information herein.