



Santa Rosa Office Centrally Located-Near Courthouse FOR LEASE



**2777 Cleveland Ave # 101
Santa Rosa, CA 95403**



Nick Abbott
CA BRE # 01735748
Phone: 707-523-2700
Cell: 707-529 1722
Fax: 707-526-4311
nabbott@Northbayprop.com

2777 Cleveland Ave # 110
Santa Rosa, CA 95403
707-523-2700 Main
707-526-4311 Fax
www.northbayprop.com

The above information, while not guaranteed, has been secured from sources we believe to be reliable. This is not an offer to sell or lease and is subject to change or withdrawal.
An interested party should verify the status of the property and the information herein.



ADDRESS:
2777 Cleveland Ave, Santa Rosa, CA 95403

SUITE:	RENTABLE SQUARE FOOT:	GROSS LEASE RATE:	NOTES:
101	965+/- Sq. Ft. Rentable	\$1.80 psf (\$1,737.00)	Access to common kitchen and conf. room

SUMMARY:

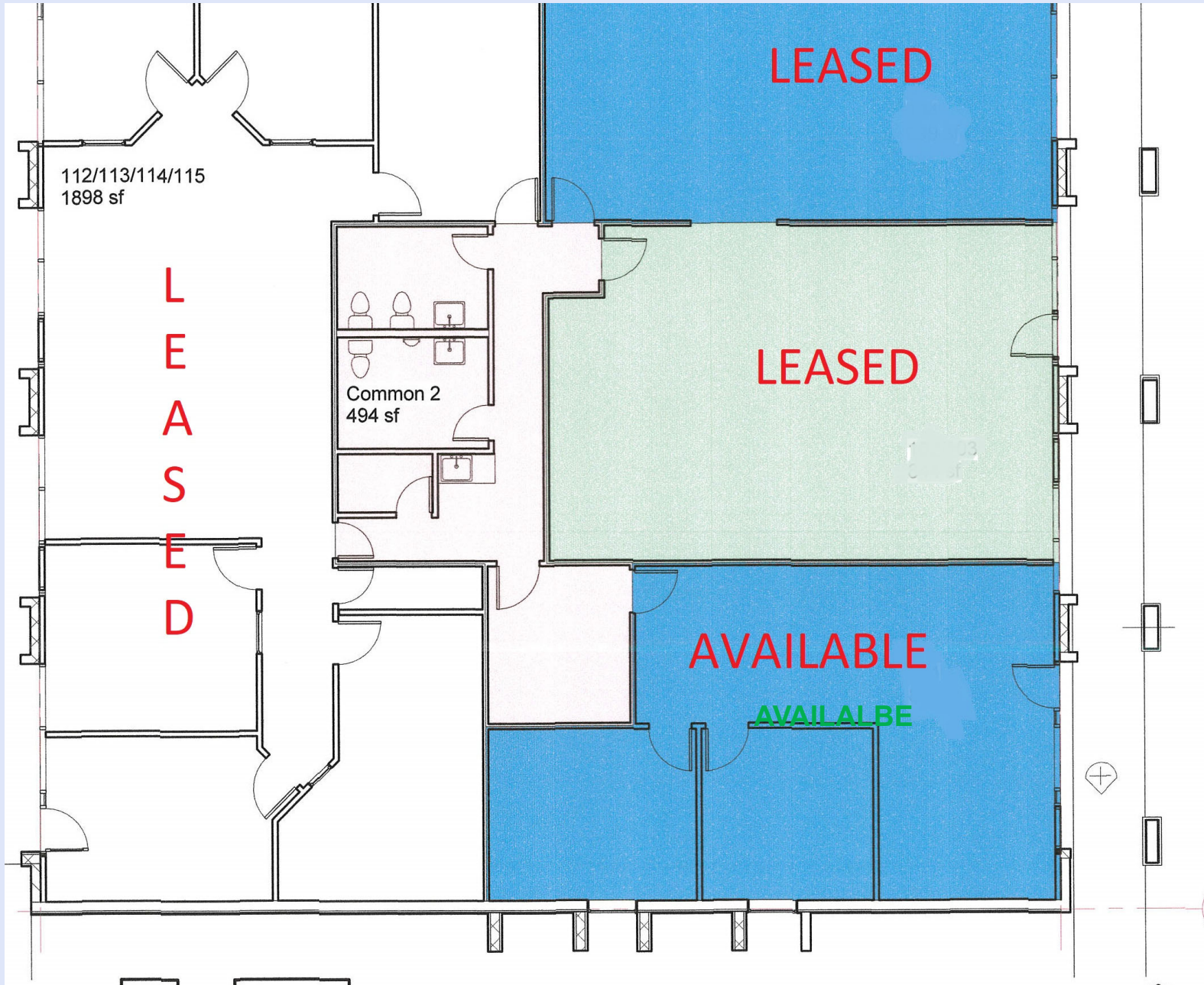
2777 Cleveland Ave is centrally located in Santa Rosa near Sonoma County Superior Court, Coddington Mall, Orchard Supply Hardware, Redwood Credit Union Corporate Headquarters, Sonoma County Administrative Buildings, Kaiser Hospital, transportation and other professional buildings. All suites have access to common kitchen facilities and conference room. The interior has undergone renovations in 2014/2015. All spaces have newer carpet and paint. Cubicles may be available or can be removed.

Building offers excellent street exposure, signage, abundant on-site parking, and professional property management. Daily traffic counts on Cleveland Ave. are approx. 15,797.





Parking Lot



Cleveland Avenue



The above information, while not guaranteed, has been secured from sources we believe to be reliable. This is not an offer to sell or lease and is subject to change or withdrawal.

An interested party should verify the status of the property and the information herein.



PROPERTY/PHOTOS

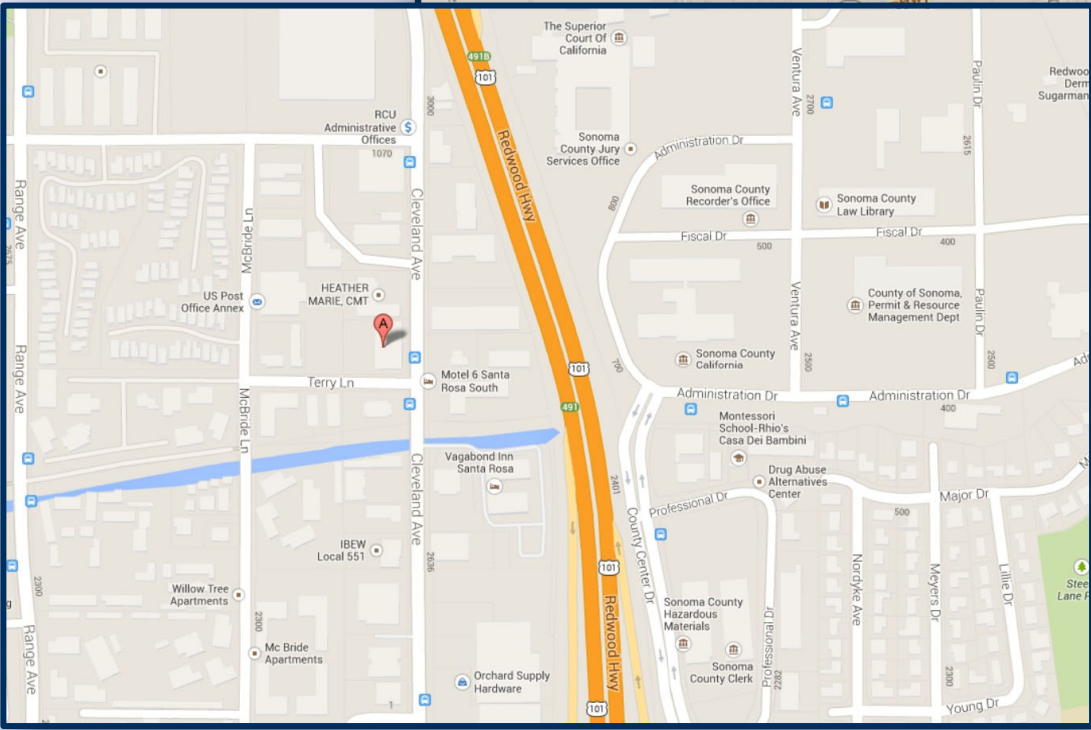
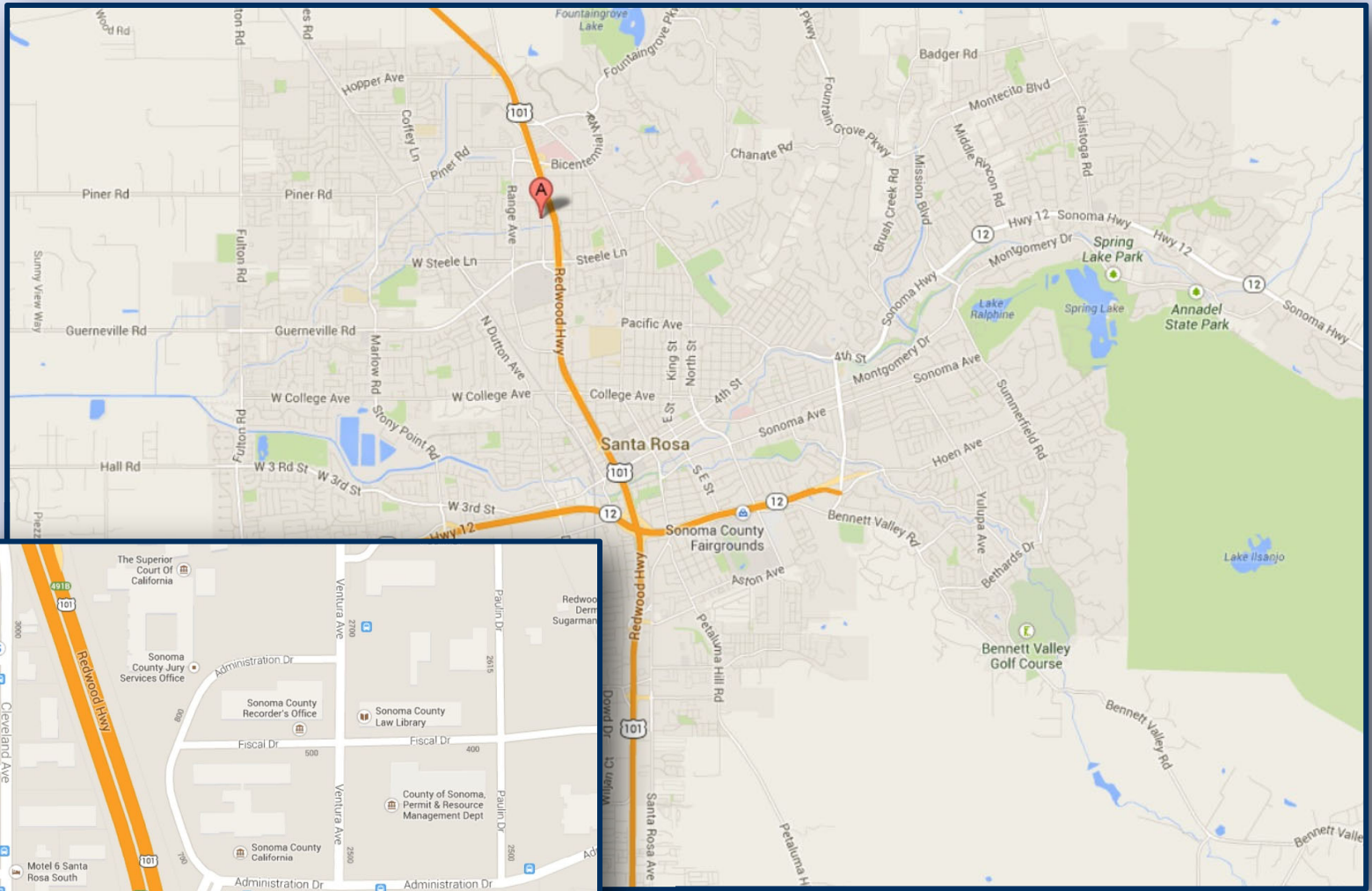


The above information, while not guaranteed, has been secured from sources we believe to be reliable. This is not an offer to sell or lease and is subject to change or withdrawal.

An interested party should verify the status of the property and the information herein.

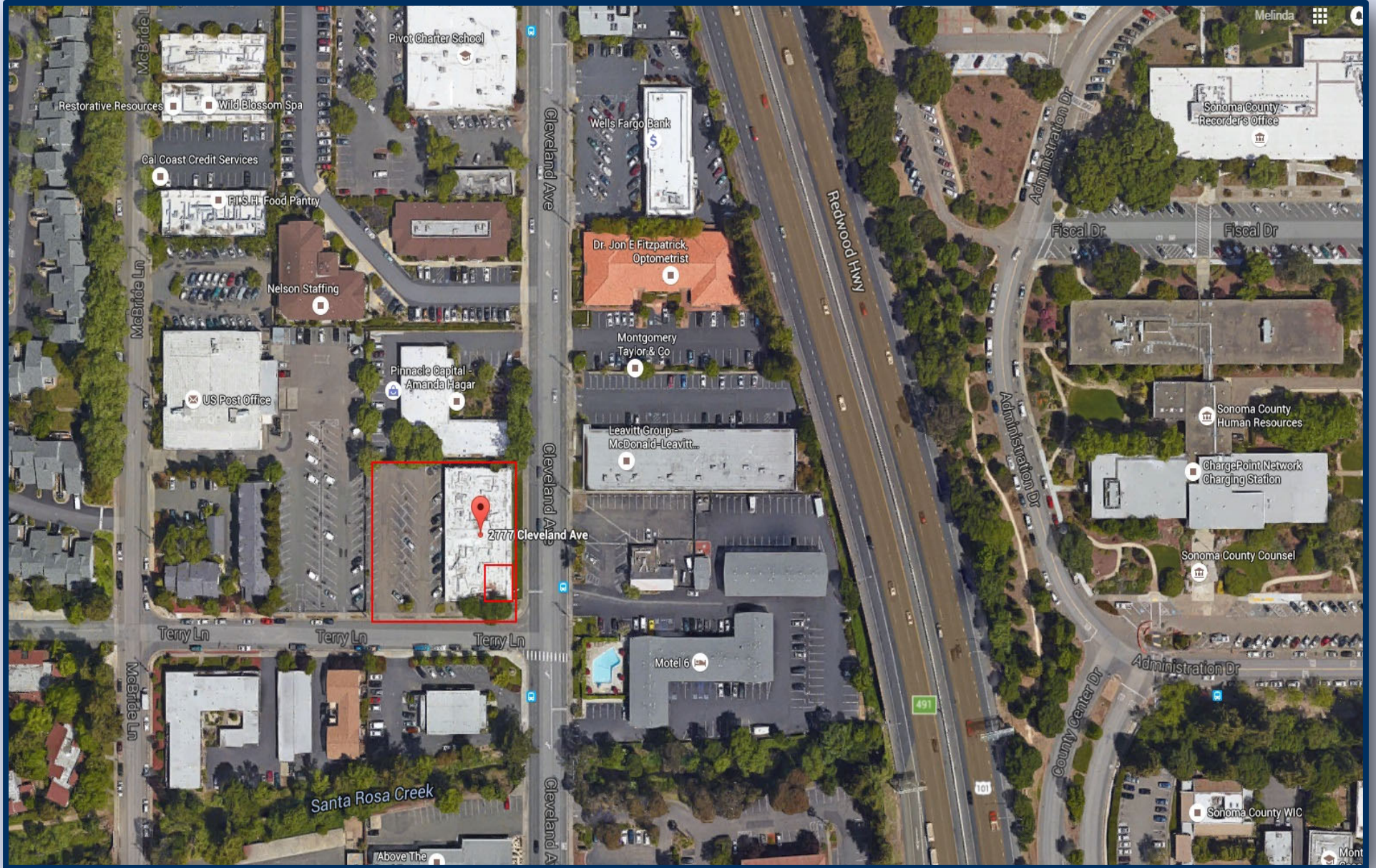


LOCATION / STREET MAP





PROPERTY / SITE AERIAL MAP





BROKER TEAM

Nick Abbott
nabbott@northbayprop.com



Cell:
707-529-1722
Phone:
707-523-2700
BRE No.:
01357548

Santa Rosa Office:
2777 Cleveland Ave., Ste., 110
Santa Rosa, CA 95403
707-523-2700



The above information, while not guaranteed, has been secured from sources we believe to be reliable. This is not an offer to sell or lease and is subject to change or withdrawal.

An interested party should verify the status of the property and the information herein.