



FOR LEASE

WAREHOUSE / LIGHT INDUSTRIAL

1000 PINER ROAD UNIT B, SANTA ROSA

Northern California's Premier Commercial Real Estate Firm



Daniel Silewicz

CA BRE # 01988015

Phone: 707-523-2700

Cell: 707-328-1141

Email: daniel@northbayprop.com

North Bay Property Advisors

2777 Cleveland Ave. Suite 110

Santa Rosa, CA 95403

707-523-2700

www.NorthBayProp.com



The above information, while not guaranteed, has been secured from sources we believe to be reliable. This is not an offer to sell or lease and is subject to change or withdrawal. Any interested party should verify the status of the property and the information herein.



PROPERTY SUMMARY

1000 Piner Road Unit B & D-2, Santa Rosa

Approximate Size	2,240 +/- Sq. Ft.
Monthly Rate	\$2,688.00 (\$1.20 psf + NNN)
Lease	NNN (\$0.30 psf)
Roll-up Doors	One 12' tall x 18' wide
Fire Suppression	Yes
Parking	7 spaces
HVAC	Heat, but no AC
Restrooms	One Private
Traffic Count	22,756 VPD

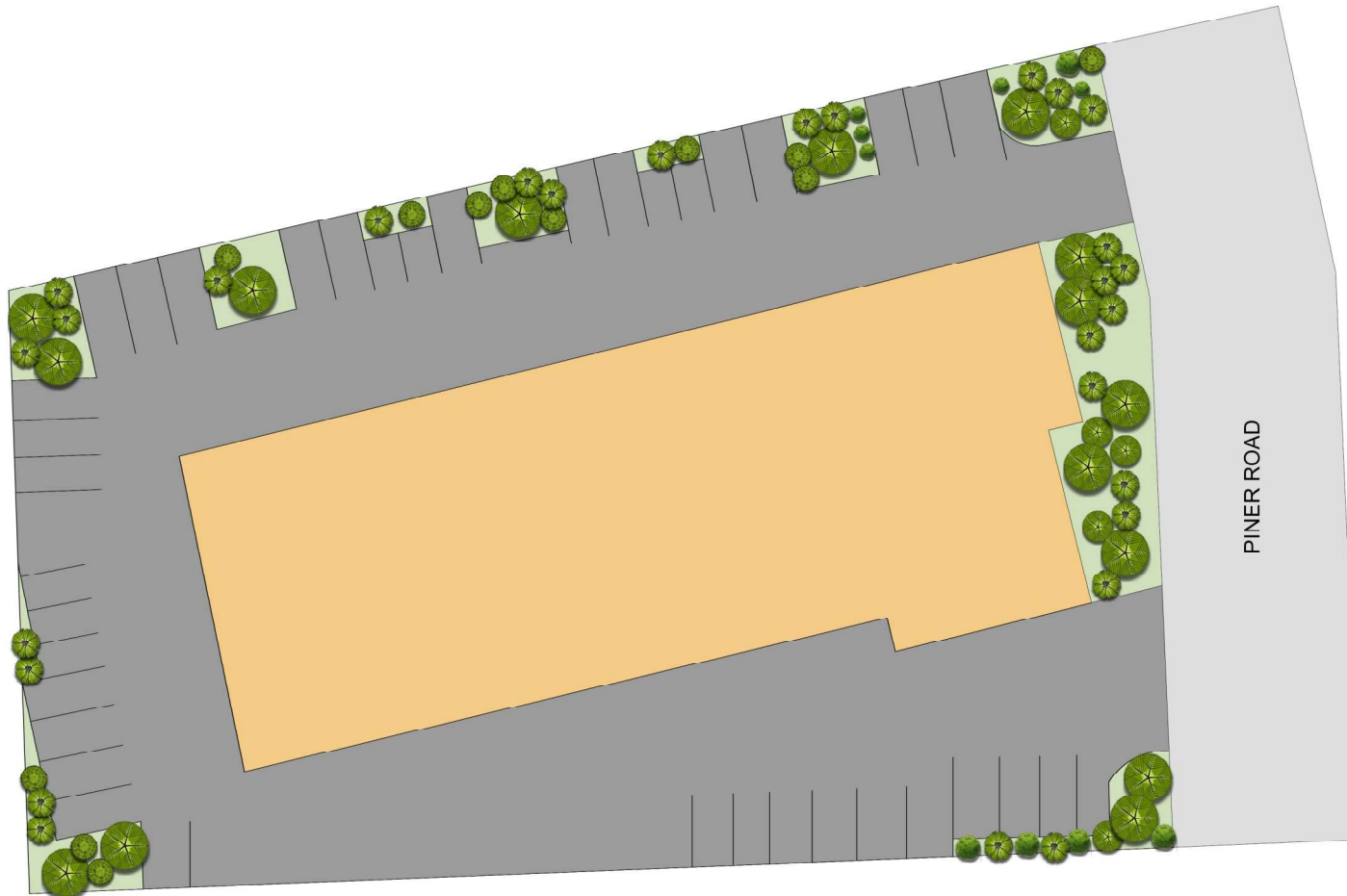


1000 Piner Unit B & D-2

The Property is located in a well-traveled area that has numerous restaurants, retail, industrial and other commercial uses nearby. The site has excellent signage on Piner Rd. at the controlled intersection of Piner and Airway Drive. The property is a short distance to the Coddington Shopping Center and U.S. Hwy 101. Unit B has one 12' by 18' roll up door, large warehouse area, reception / waiting room area, private office and fire suppression. All FF&E inside Suite B can be purchased separately with current Lessee.

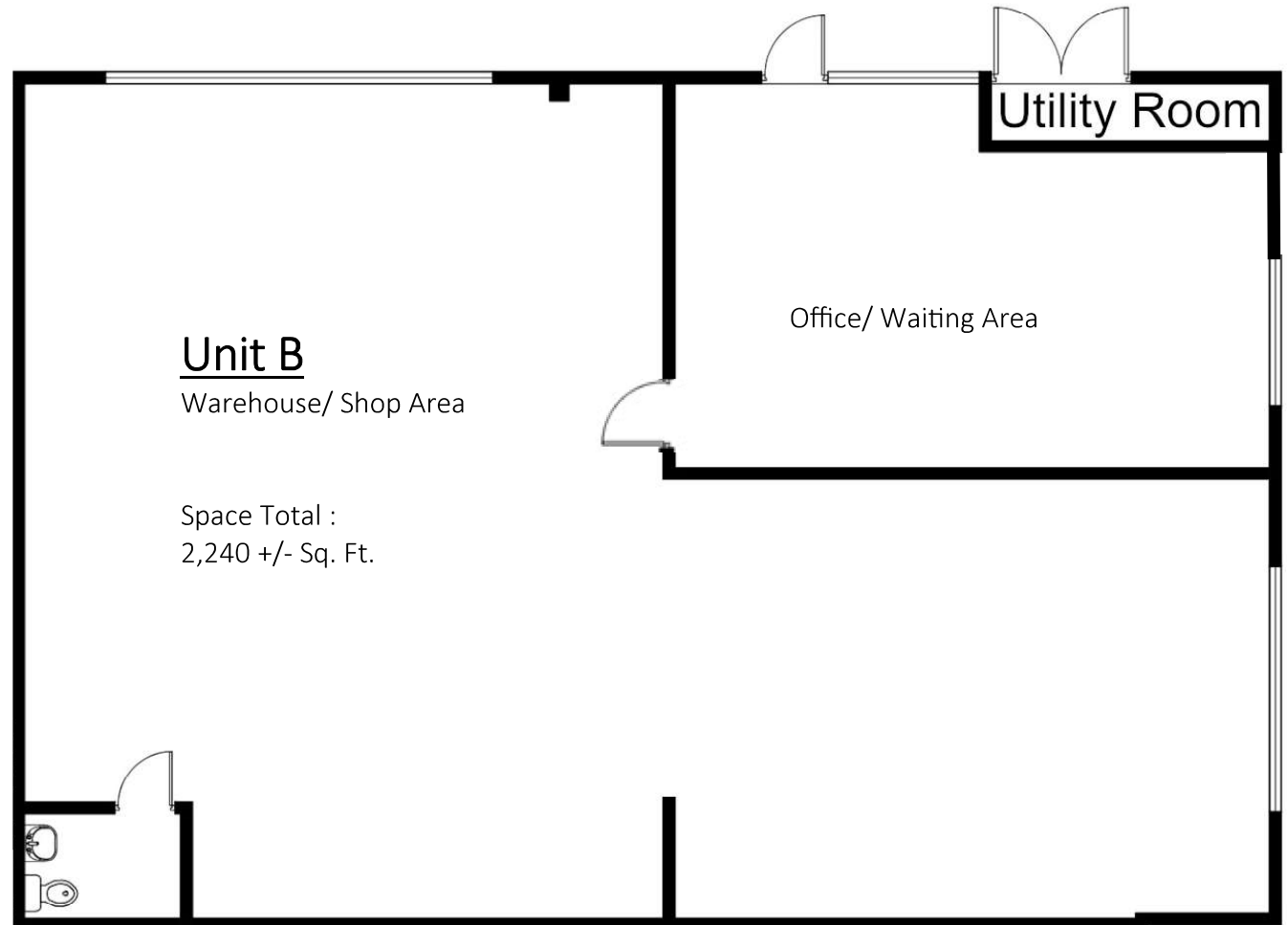


SITE PLAN



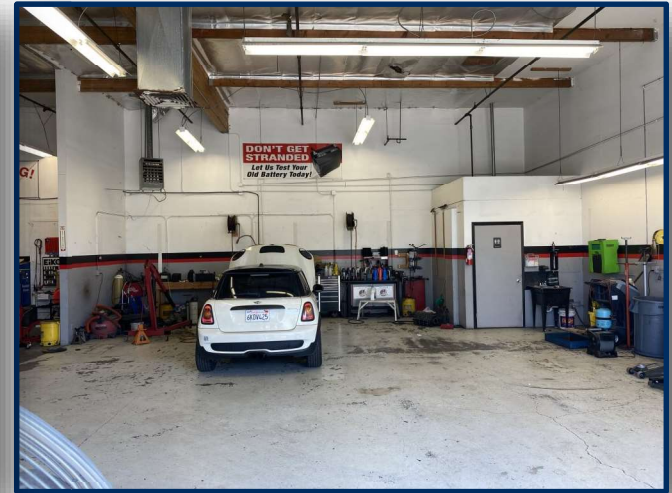
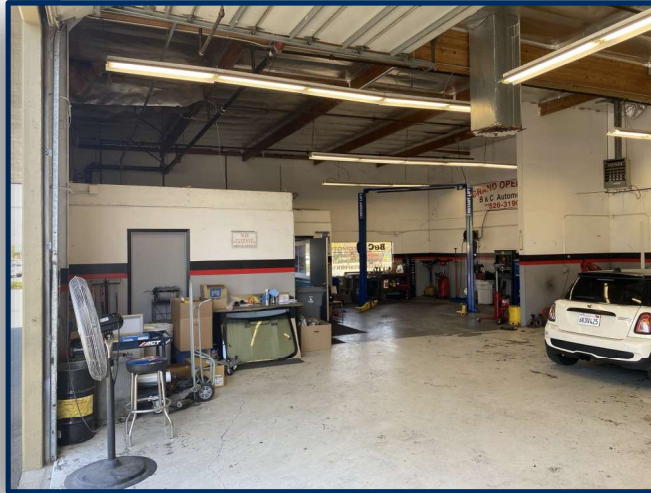


FLOOR PLAN





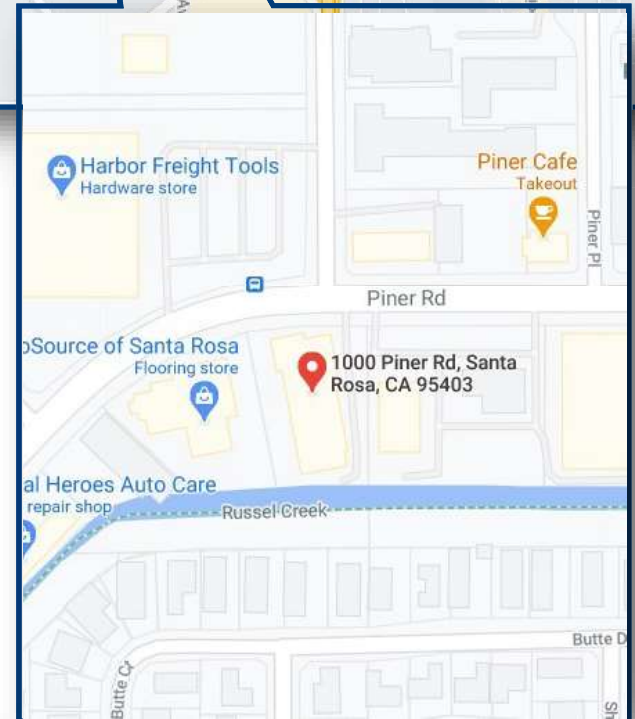
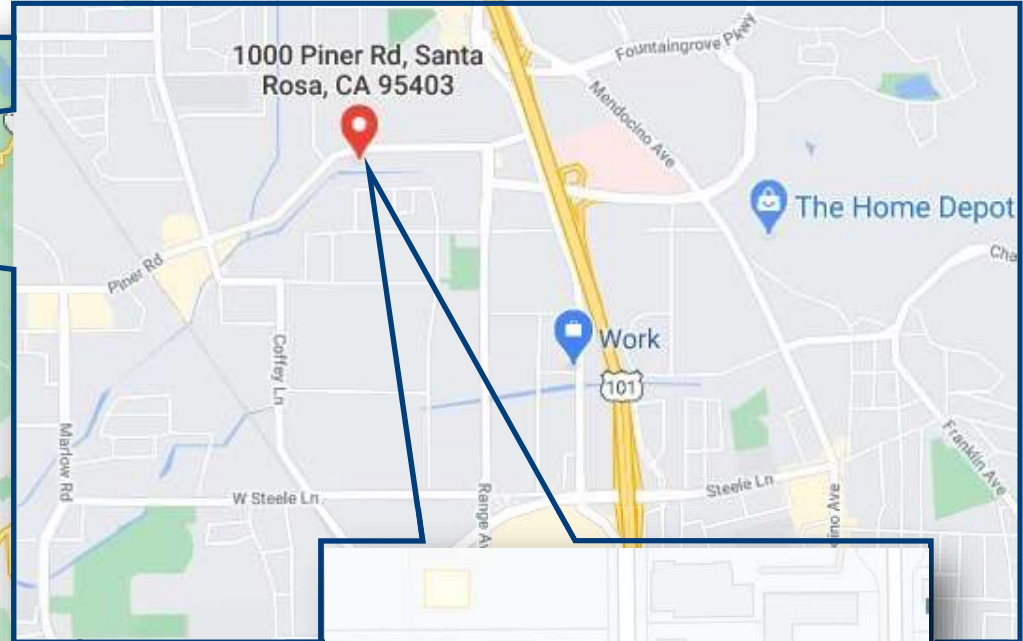
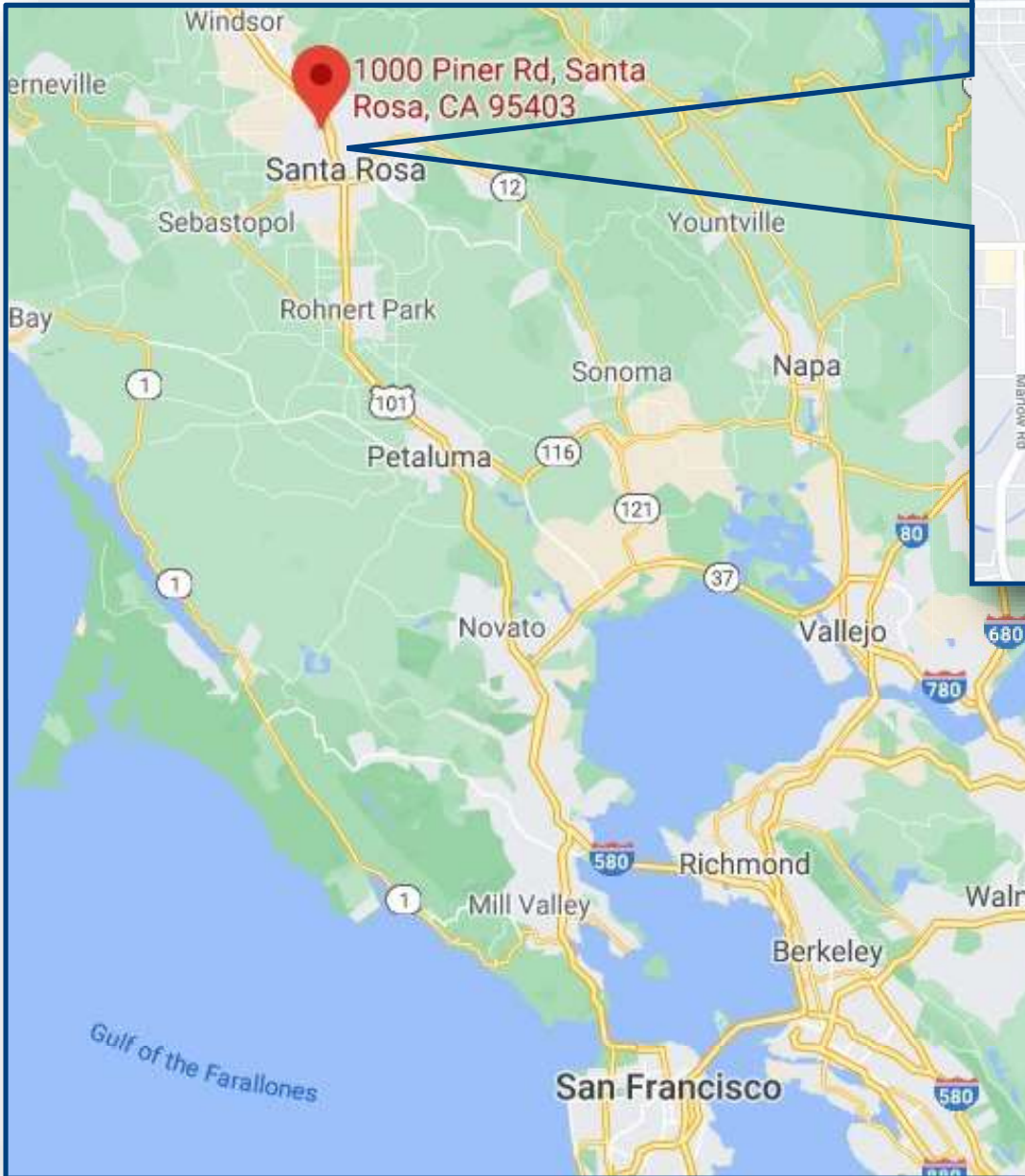
PHOTOS UNIT B



The above information, while not guaranteed, has been secured from sources we believe to be reliable. This is not an offer to sell or lease and is subject to change or withdrawal. Any interested party should verify the status of the property and the information herein.



MAPS



The above information, while not guaranteed, has been secured from sources we believe to be reliable. This is not an offer to sell or lease and is subject to change or withdrawal. Any interested party should verify the status of the property and the information herein.



LISTING TEAM



Daniel Silewicz

CA BRE # 01988015

Phone: 707-523-2700

Cell: 707-328-1141

Email: daniel@northbayprop.com



NORTHERN CALIFORNIA OFFICES

SANTA ROSA

NOVATO

SONOMA / NAPA

SAN JOSE

SACRAMENTO

WALNUT CREEK

SAN FRANCISCO

North Bay Property Advisors

Santa Rosa Office

2777 Cleveland Ave. Suite 110

Santa Rosa, CA 95403

707-523-2700

www.NorthBayProp.com

The above information, while not guaranteed, has been secured from sources we believe to be reliable. This is not an offer to sell or lease and is subject to change or withdrawal. Any interested party should verify the status of the property and the information herein.