



NORTH BAY
PROPERTY ADVISORS

FOR LEASE
WAREHOUSE/OFFICE/SHOWROOM
CENTRAL SANTA ROSA

LEASE RATE:

Unit 830: \$.59
psf

1,475+/-
Warehouse and
840+/- sf Office/
showroom

ZONING:

IL-(Industrial
Light)
General Plan is
Medium Density
Residential

Lead Broker / Agent
William M. Severi,
CCIM
DRE No.: 01000344
707-523-2700 ext. 302
707-291-2722 cell
bill@williamseveri.com



830 Cleveland Ave.
Santa Rosa, CA 95401



The above information, while not guaranteed, has been secured from sources we believe to be reliable. This is not an offer to sell or lease and is subject to change or withdrawal. An interested party should verify the status of the property and the information herein.

Pricing

Lease Rate: 830 Cleveland: \$.59 psf/ mo gross

Building

Year Built: 1983

Construction / Siding: Metal

Floors: Concrete

Stories: 1

Approximate Build. Sq. Ft.: 4,981 +/- sf

Warehouse: Unit# 830: 1,475 +/- sf

Office: Unit# 830: 840 +/- sf office/
showroom

Sprinklers: Yes

Roll Ups: One 12' x 12' Door

Site

APN: 010-101-014 (Sonoma County)

Size: .28 +/- acres (12,197 +/- sf)

Zoning: (IL) Industrial Light
General Plan is Medium Density
Residential

Parking: 6 spaces assigned

City / County: Santa Rosa/Sonoma

Water & Sewer: City of Santa Rosa

Gas & Electric: PG&E
Separately Metered units



Broker Team



Cell:
707-291-2722

Phone:
707-523-2700
ext. 302

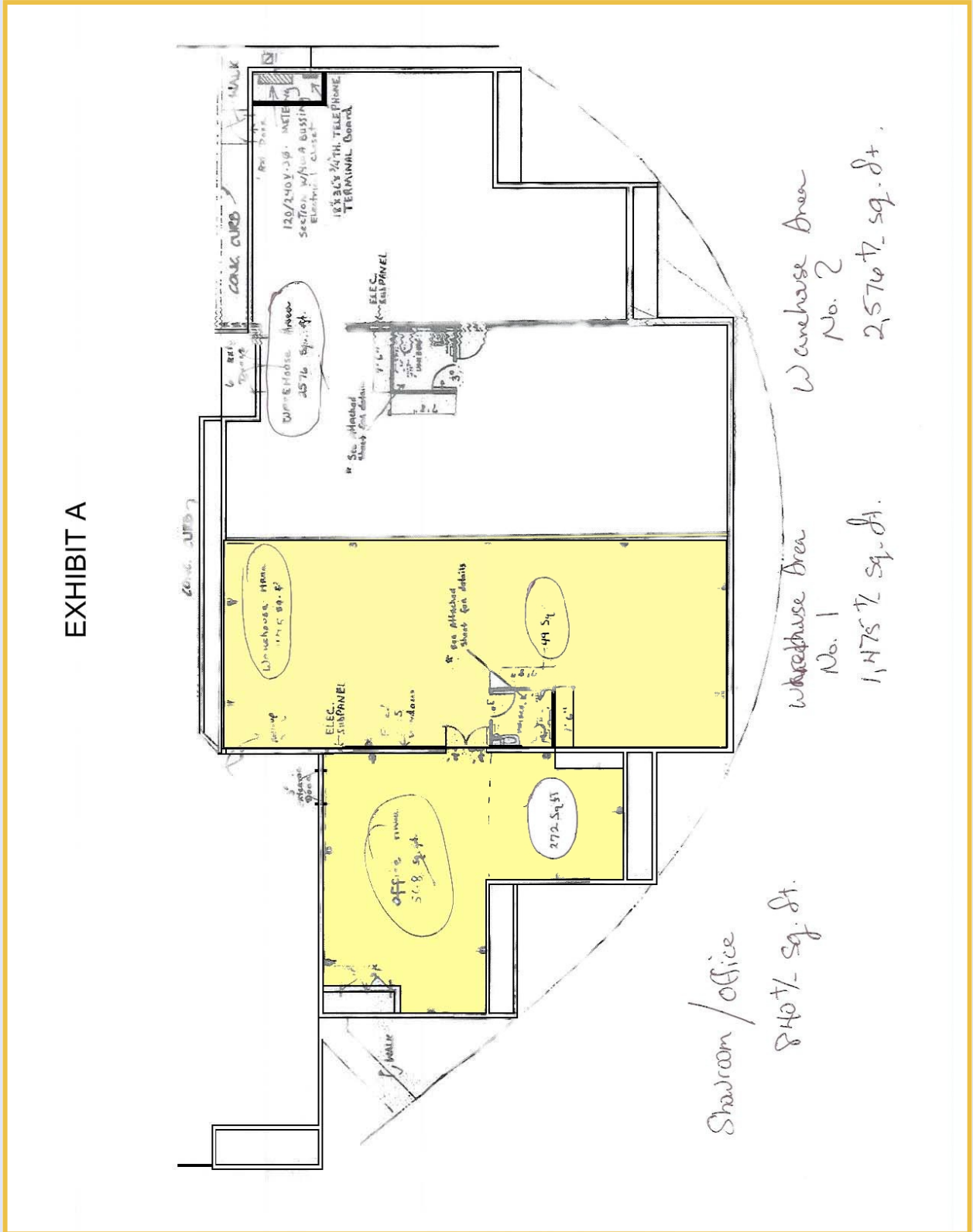
William M. Severi, CCIM
bill@williamseveri.com
CA DRE No.: 01000344



Cell:
707-529-1722

Phone:
707-523-2700
ext. 305

Nick Abbott
nabbott@northbayprop.com
CA DRE No.: 01357548





The above information, while not guaranteed, has been secured from sources we believe to be reliable. This is not an offer to sell or lease and is subject to change or withdrawal. An interested party should verify the status of the property and the information herein.



The above information, while not guaranteed, has been secured from sources we believe to be reliable. This is not an offer to sell or lease and is subject to change or withdrawal. An interested party should verify the status of the property and the information herein.

