



FOR LEASE - WAREHOUSE / BULK RETAIL
2,600 +/- Sq. Ft. WAREHOUSE RETAIL SPACE
63 WEST NORTH ST., HEALDSBURG, CA 95448

Northern California's Premier Commercial Real Estate Firm



Daniel Silewicz

CA BRE # 01988015

Phone: 707-523-2700

Cell: 707-328-1141

Email: daniel@northbayprop.com

North Bay Property Advisors

2777 Cleveland Ave. Suite 110

Santa Rosa, CA 95403

707-523-2700

www.NorthBayProp.com



The above information, while not guaranteed, has been secured from sources we believe to be reliable. This is not an offer to sell or lease and is subject to change or withdrawal. Any interested party should verify the status of the property and the information herein.



FOR LEASE SUMMARY

PRICING

| | |
|-----------------------------|----------------------------|
| Monthly Rental Amount: | \$3,510.00 (\$1.35 per SF) |
| Estimated NNN Monthly Cost: | \$ 390.00 (\$0.15 per SF) |

SITE / BUILDING

| | |
|-----------------------------------|--------------------------------------|
| Approximate Total Usable Sq. Ft.: | 3,064 +/- |
| Warehouse: | 2,600 +/- |
| Mezzanine: | 464 +/- (No rent charged on Mezz) |
| Zoning: | I (Industrial) |
| Grade Level Roll up door: | 12' wide x 14' Tall |
| Fire Suppression: | Yes |
| Insulation: | Yes |
| Interior Clearance: | 13' to 18' |
| Upgraded flooring : | Polished Concrete |
| Power: | 225 AMPS / Three Phase |



64 WEST NORTH ST:

Welcome to 64 W. North Street. 2,600 +/- Sq. Ft. of warehouse / bulk retail space in a large multi-tenant building in the heart of Healdsburg. Located 1 mile from 101, 15 min to Sonoma County Airport, 5 blocks to the plaza and dozens of restaurants and retailers. The space features polished concrete floors, LED lights, insulated, fire suppression, one grade level roll up door, 13 to 18 foot tall inter clear height, loft space, two private restrooms, and ample parking.



PHOTOS



The above information, while not guaranteed, has been secured from sources we believe to be reliable. This is not an offer to sell or lease and is subject to change or withdrawal. Any interested party should verify the status of the property and the information herein.



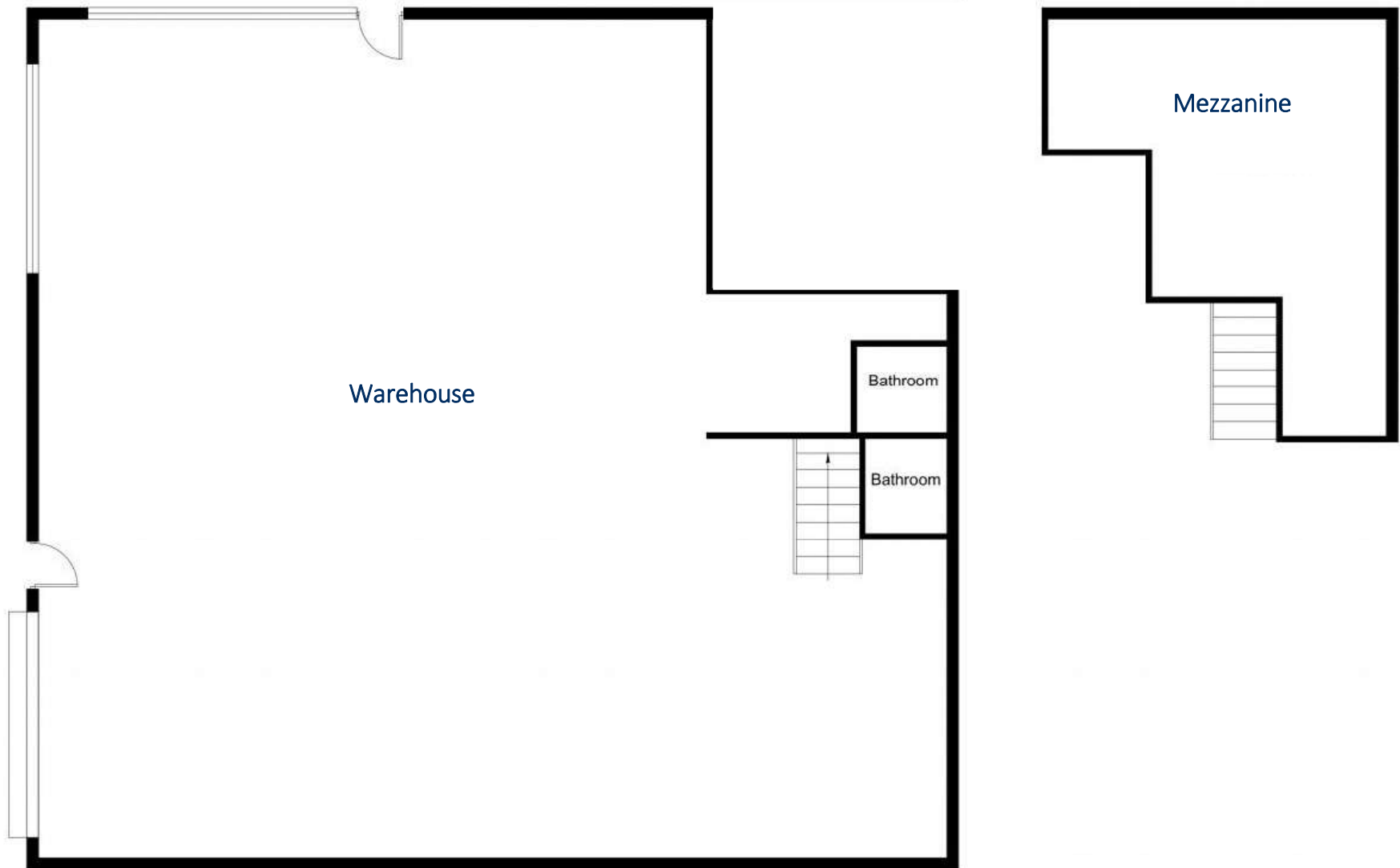
PHOTOS



The above information, while not guaranteed, has been secured from sources we believe to be reliable. This is not an offer to sell or lease and is subject to change or withdrawal. Any interested party should verify the status of the property and the information herein.



FLOOR PLAN





NEIGHBORHOOD MAP



The above information, while not guaranteed, has been secured from sources we believe to be reliable. This is not an offer to sell or lease and is subject to change or withdrawal. Any interested party should verify the status of the property and the information herein.



BROKER TEAM



Daniel Silewicz

CA BRE # 01988015

Phone: 707-523-2700

Cell: 707-328-1141

Email: daniel@northbayprop.com



The above information, while not guaranteed, has been secured from sources we believe to be reliable. This is not an offer to sell or lease and is subject to change or withdrawal. Any interested party should verify the status of the property and the information herein.