



FOR LEASE : Industrial Warehouse with Yard
11 W Barham Ave, Building B, Santa Rosa, CA
95407. 4,320 sq.ft asking \$4,320/month NNN.

Northern California's Premier Commercial Real Estate Firm



Nick Abbott

CA BRE # 01357548

Phone: 707-523-2700

Cell: 707-529-1722

Email: nabbott@northbayprop.com



North Bay Property Advisors

2777 Cleveland Ave. Suite 110

Santa Rosa, CA 95403

707-523-2700

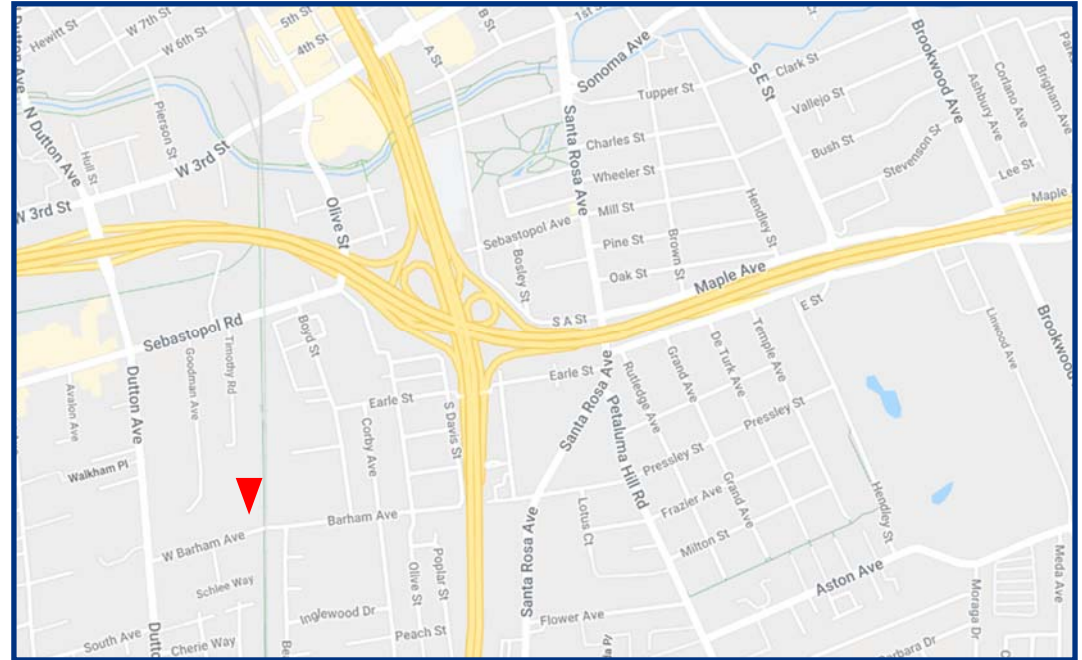
www.NorthBayProp.com

The above information, while not guaranteed, has been secured from sources we believe to be reliable. This is not an offer to sell or lease and is subject to change or withdrawal. Any interested party should verify the status of the property and the information herein.



OVERVIEW

ADDRESS:	11 W Barham Ave, Building B Santa Rosa, CA 95407
Lease Rate	4,320 / Month
Space Available	4,320 +/- Square Feet
Access	1 roll up grade level door
Zoning	PD
Parking	On-Site, Abundant
Electrical Service	PG&E, 400 Amp 3 phase
Warehouse	4,320 +/- sq.ft
Office	100 +/- sq.ft



Property Description

Building B has both a Grade level door, no sprinklers. Yard space of approximately .76 acres is available at a different price. Small single occupant office, and 2 restrooms. Premises had been a cabinet shop for nearly 20 years. Warehouse area has 400 amp 3phase power, no sprinklers. Adjacent building of 9,800 sq.ft could also be available. Property is in the midst of a zoning change to Light Industrial. General Plan is in support of this change, and previous uses have all been industrial.



PHOTOS

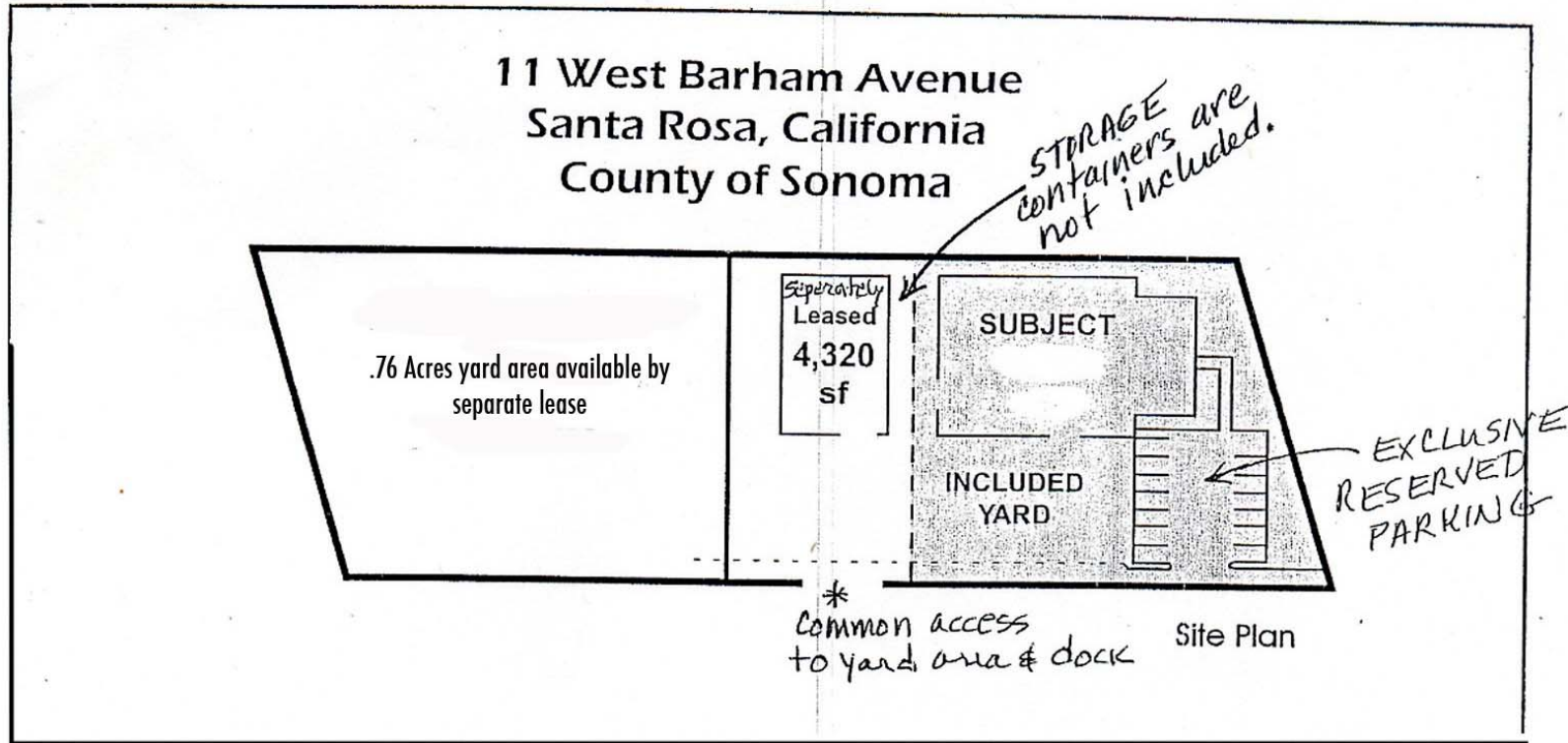


The above information, while not guaranteed, has been secured from sources we believe to be reliable. This is not an offer to sell or lease and is subject to change or withdrawal. Any interested party should verify the status of the property and the information herein.



SITE—SITE PLAN

11 W Barham Ave, Santa Rosa





AERIAL VIEW

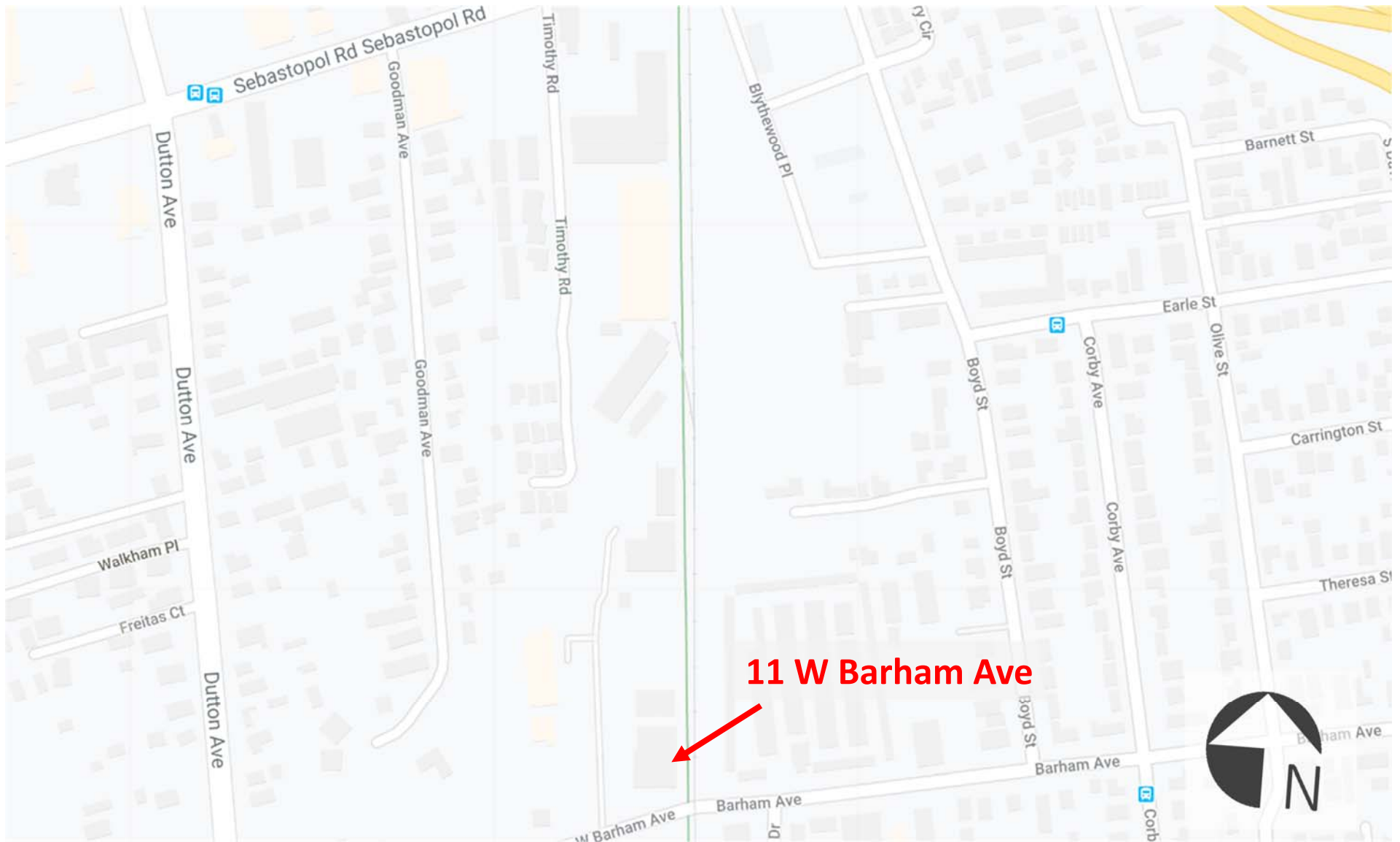
11 W Barham Ave, Santa Rosa



The above information, while not guaranteed, has been secured from sources we believe to be reliable. This is not an offer to sell or lease and is subject to change or withdrawal. Any interested party should verify the status of the property and the information herein.



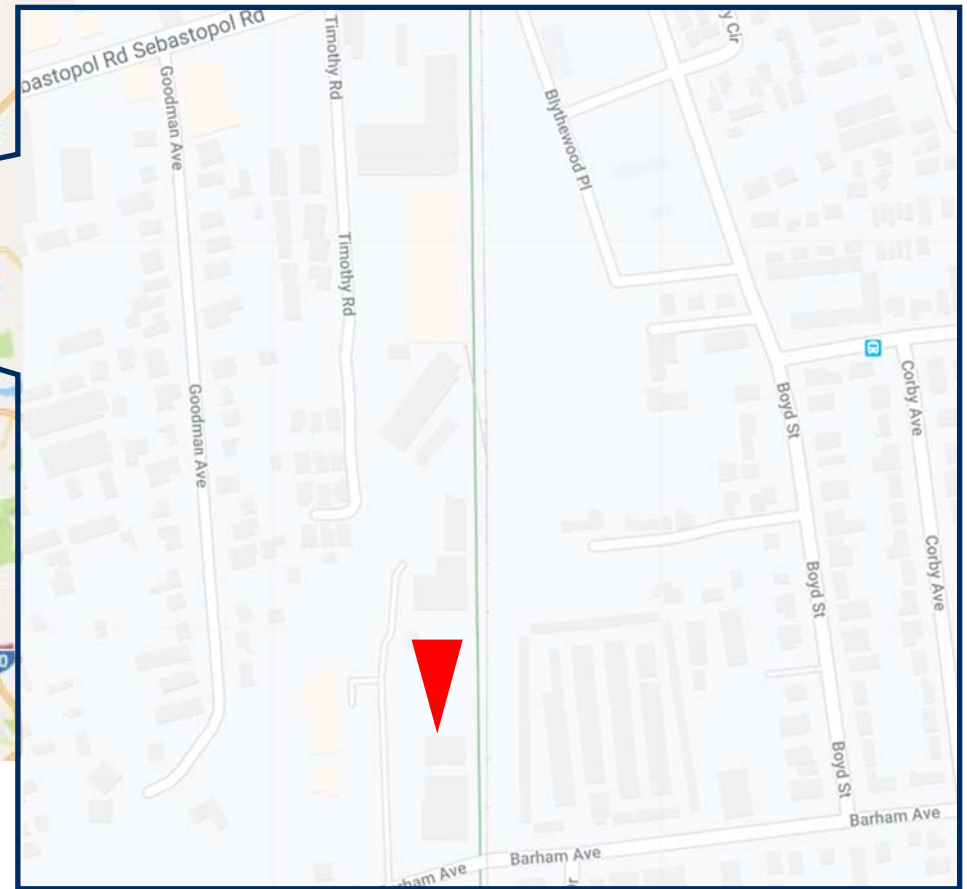
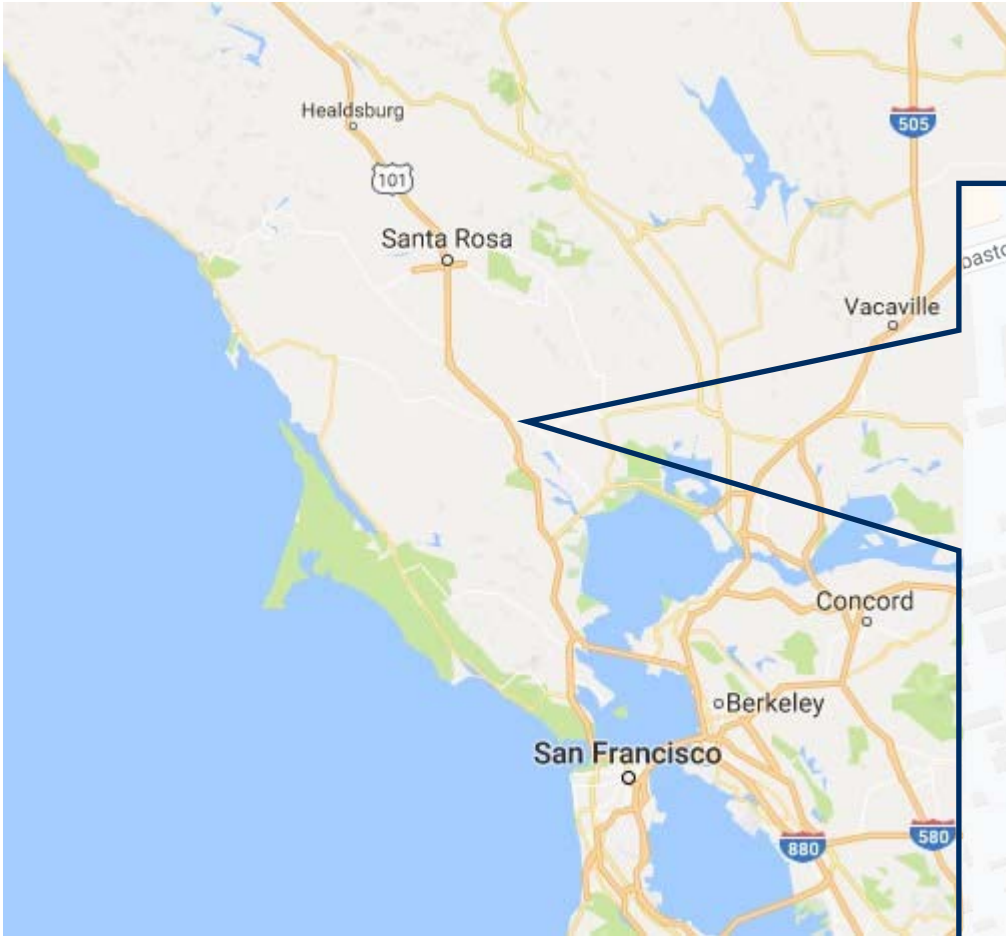
SURROUNDING BUSINESS



The above information, while not guaranteed, has been secured from sources we believe to be reliable. This is not an offer to sell or lease and is subject to change or withdrawal. Any interested party should verify the status of the property and the information herein.



MAPS



The above information, while not guaranteed, has been secured from sources we believe to be reliable. This is not an offer to sell or lease and is subject to change or withdrawal. Any interested party should verify the status of the property and the information herein.



LISTING TEAM



Nick Abbott

CA BRE # 01357548

Phone: 707-523-2700

Cell: 707-529-1722

nabbott@northbayprop.com

North Bay Property Advisors

Santa Rosa Office

2777 Cleveland Ave. Suite 110

Santa Rosa, CA 95403

707-523-2700

www.NorthBayProp.com



The above information, while not guaranteed, has been secured from sources we believe to be reliable. This is not an offer to sell or lease and is subject to change or withdrawal. Any interested party should verify the status of the property and the information herein.