



FOR LEASE : WAREHOUSE

30C Mill Street, Healdsburg, CA 95448

9,600 +/- Sq. Ft. \$0.95 per Sq. Ft. + NNN

Northern California's Premier Commercial Real Estate Firm



Nick Abbott - Broker

CA BRE # 01357548

Phone: 707-523-2700

Cell: 707-529-1722

Email: nabbott@northbayprop.com



Daniel Silewicz

CA BRE # 01988015

Phone: 707-523-2700

Cell: 707-328-1141

Email: daniel@northbayprop.com



The above information, while not guaranteed, has been secured from sources we believe to be reliable. This is not an offer to sell or lease and is subject to change or withdrawal. Any interested party should verify the status of the property and the information herein.



OVERVIEW

SUITE	APPROXIMATE SQ. FT.	Lease Rate	ROLL UP DOOR	POWER
30C	9,600	\$0.95 sq. ft. - NNN	3 grade level roll up-doors	400 Amps

Standalone industrial building with 9,600 +/- Sq. Ft. in the Plum Industrial Park located in central Healdsburg. The building offers 3 grade level doors, fire suppression sprinklers, fully insulated, and power supply of 400 amps 3 phase. The lower level offers 2 large bullpen offices, 3 privates, reception, break room, restrooms, and warehouse. On the second Level holds a conference room and 3 large private offices. The building is zoned for industrial use. The Plum Business Park consists of multiple buildings allows, which allows for future expansion into other buildings.



The above information, while not guaranteed, has been secured from sources we believe to be reliable. This is not an offer to sell or lease and is subject to change or withdrawal. Any interested party should verify the status of the property and the information herein.



Photos

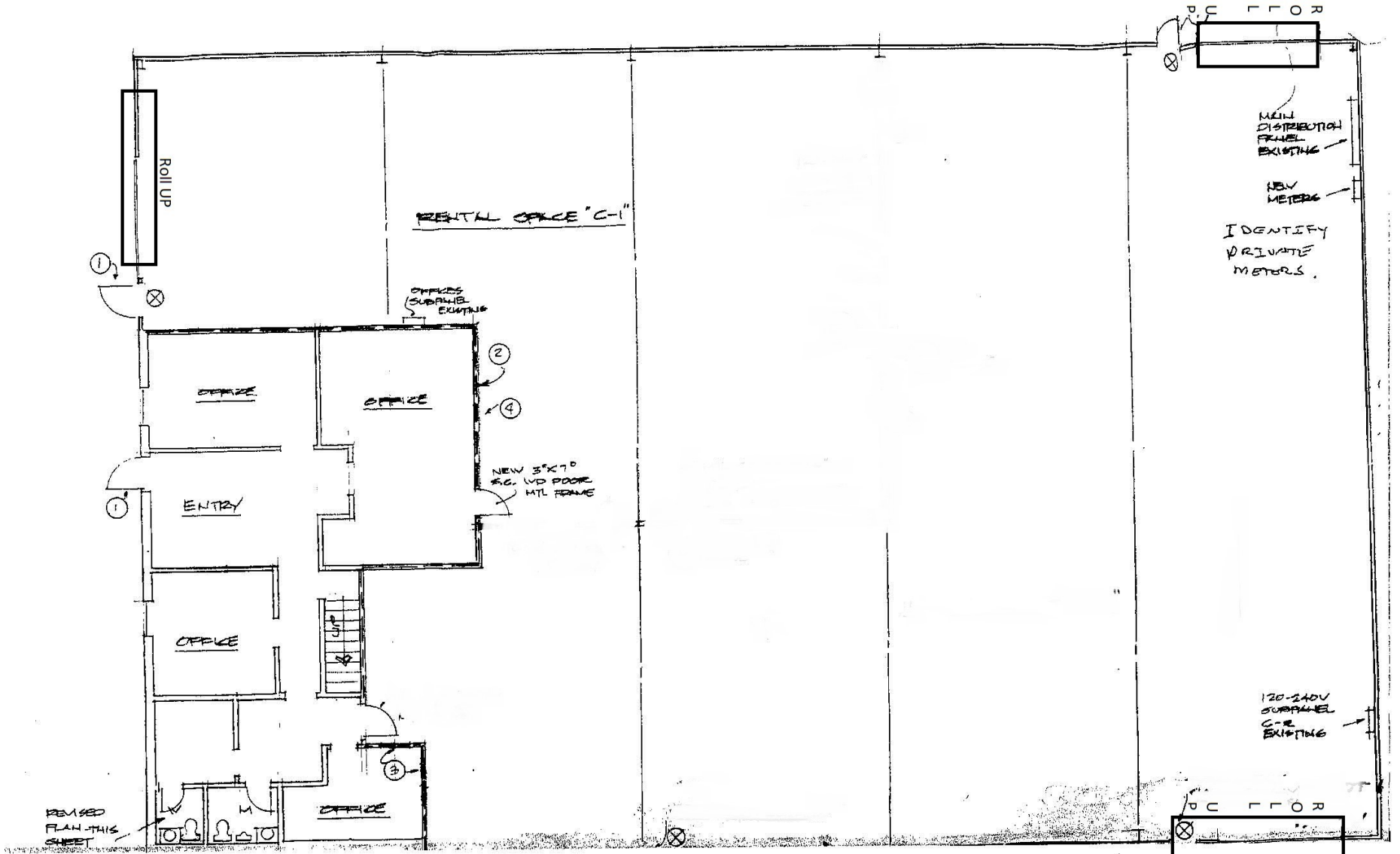


The above information, while not guaranteed, has been secured from sources we believe to be reliable. This is not an offer to sell or lease and is subject to change or withdrawal. Any interested party should verify the status of the property and the information herein.



FLOOR PLAN

30C Mill Street, Healdsburg



The above information, while not guaranteed, has been secured from sources we believe to be reliable. This is not an offer to sell or lease and is subject to change or withdrawal. Any interested party should verify the status of the property and the information herein.



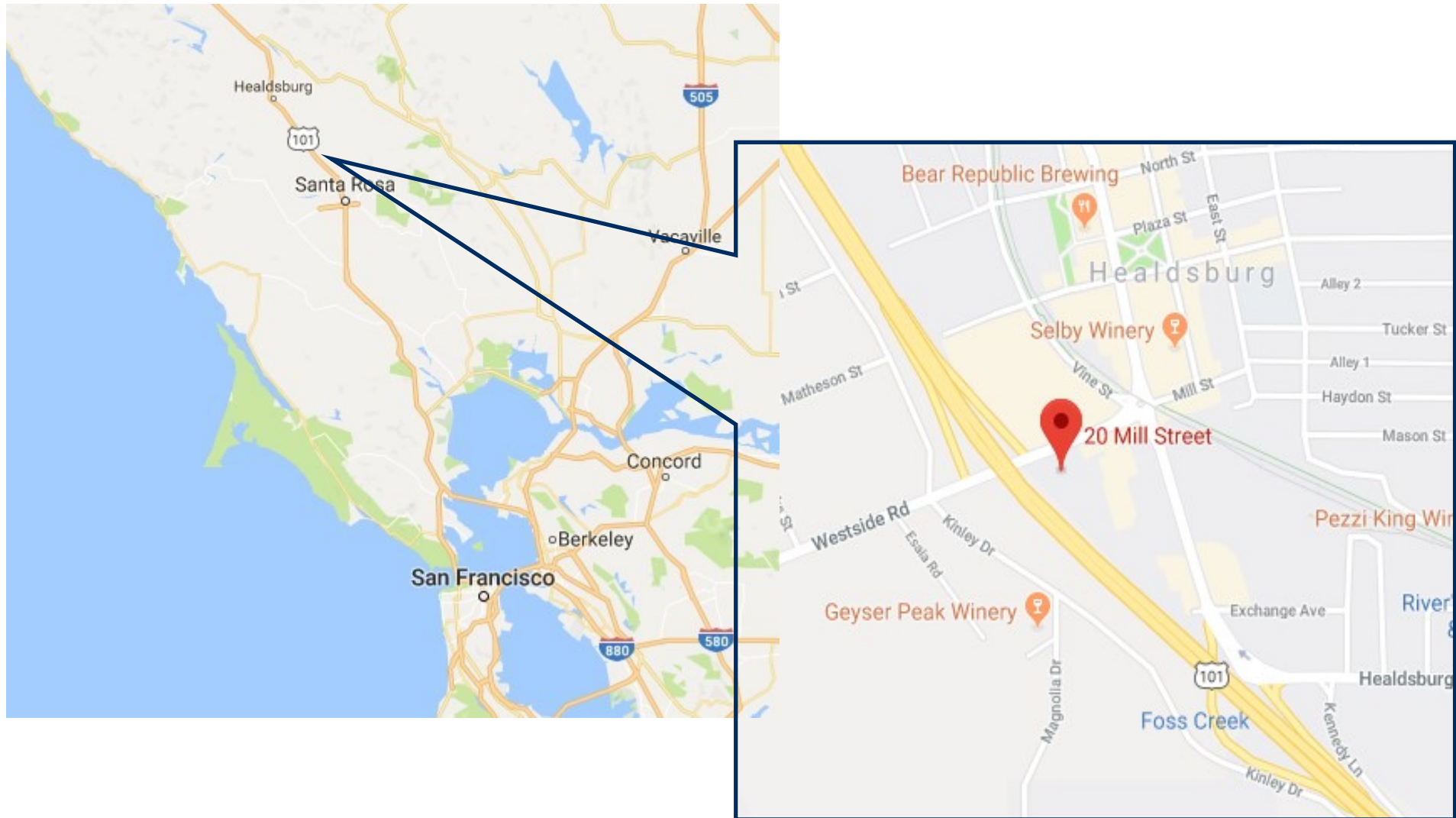
AERIAL MAP



The above information, while not guaranteed, has been secured from sources we believe to be reliable. This is not an offer to sell or lease and is subject to change or withdrawal. Any interested party should verify the status of the property and the information herein.



MAPS



The above information, while not guaranteed, has been secured from sources we believe to be reliable. This is not an offer to sell or lease and is subject to change or withdrawal. Any interested party should verify the status of the property and the information herein.



LISTING TEAM



Nick Abbott - Broker

CA BRE # 01357548

Phone: 707-523-2700

Cell: 707-529-1722

Email: nabbott@northbayprop.com

North Bay Property Advisors

Santa Rosa Office

2777 Cleveland Ave. Suite 110

Santa Rosa, CA 95403

707-523-2700

www.NorthBayProp.com



NORTHERN CALIFORNIA OFFICES

SANTA ROSA

NOVATO

SONOMA / NAPA

SAN JOSE

SACRAMENTO

WALNUT CREEK

SAN FRANCISCO

The above information, while not guaranteed, has been secured from sources we believe to be reliable. This is not an offer to sell or lease and is subject to change or withdrawal. Any interested party should verify the status of the property and the information herein.